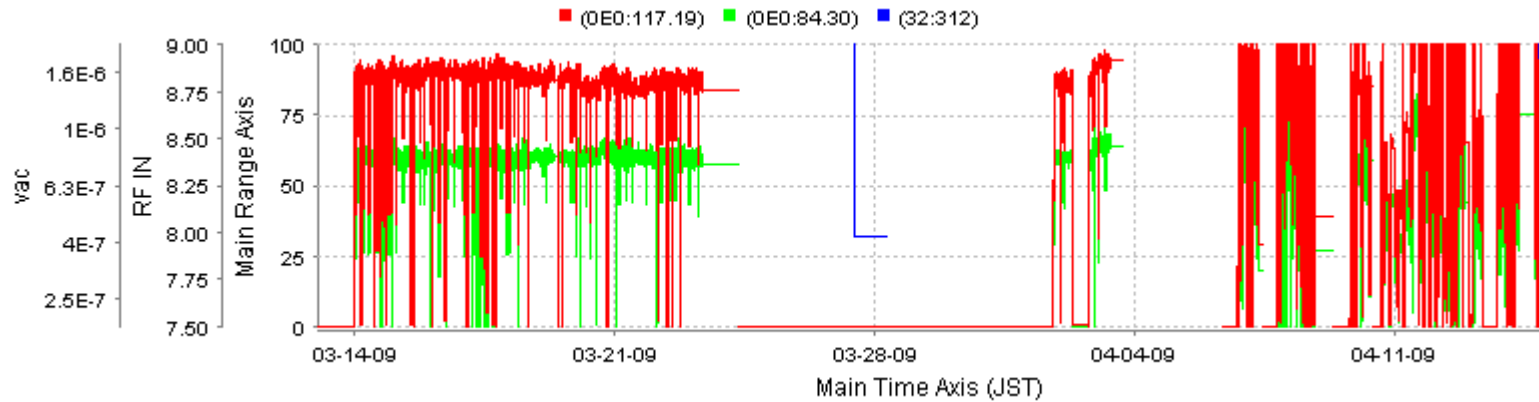


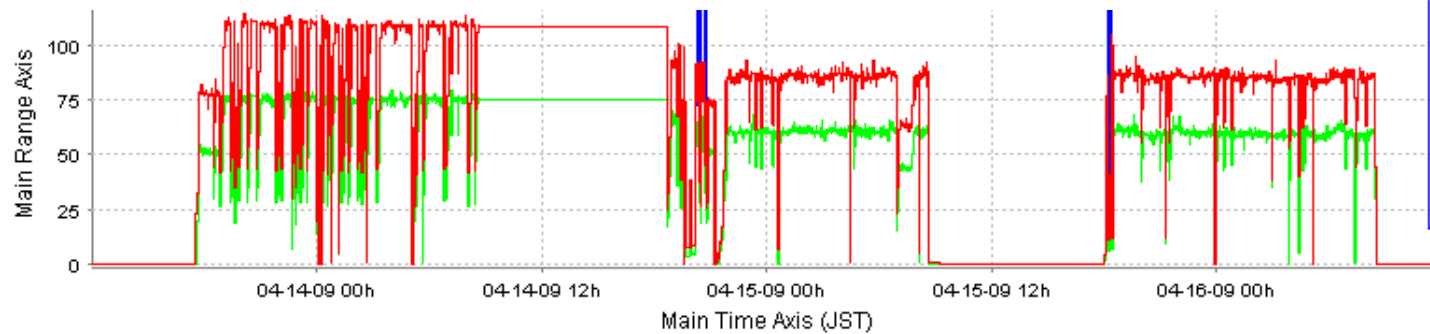
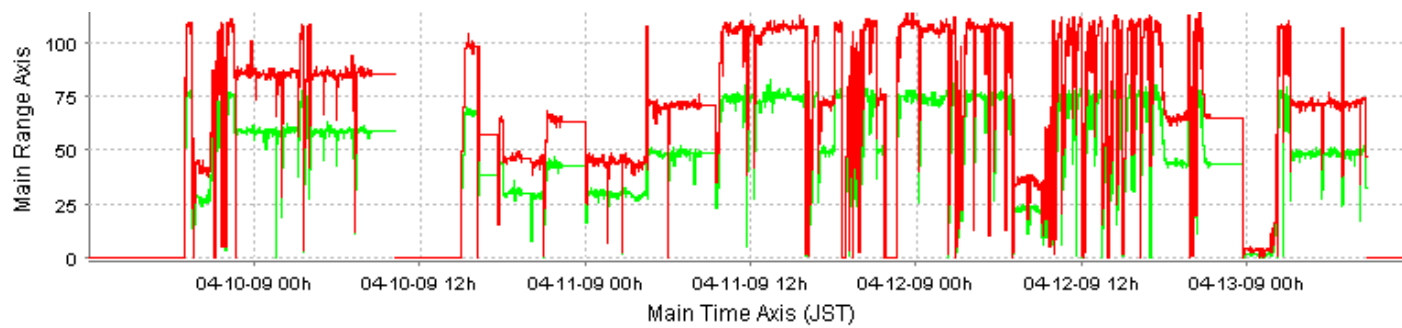
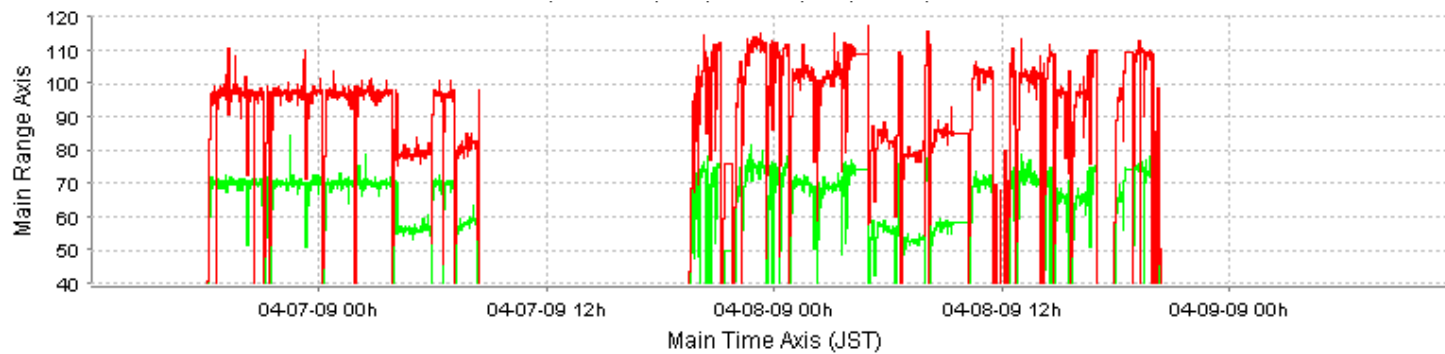
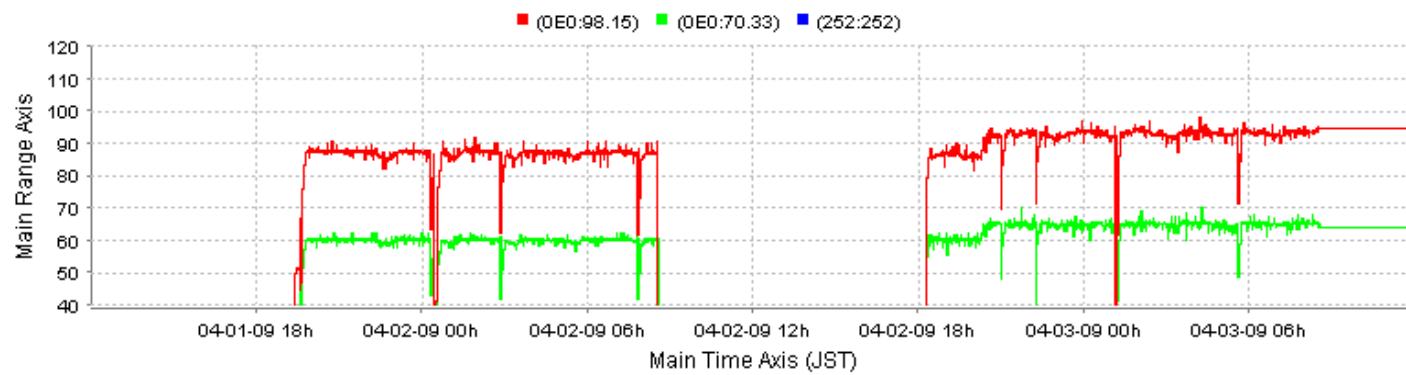
T18_VG2.4_Disk_#2 processing (11)

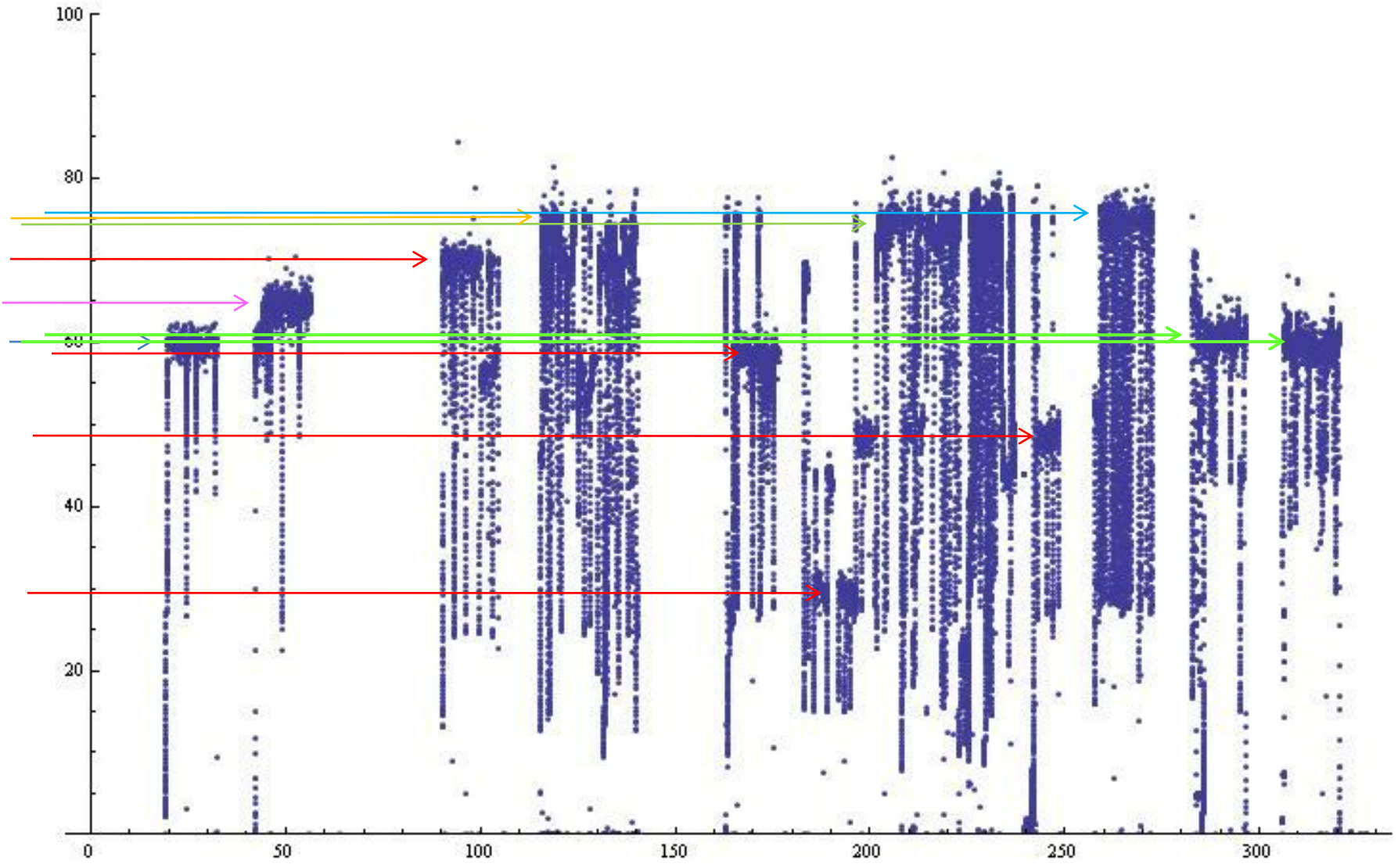
090424

T. Higo and Nextef group

Nextef T18 March-April trend

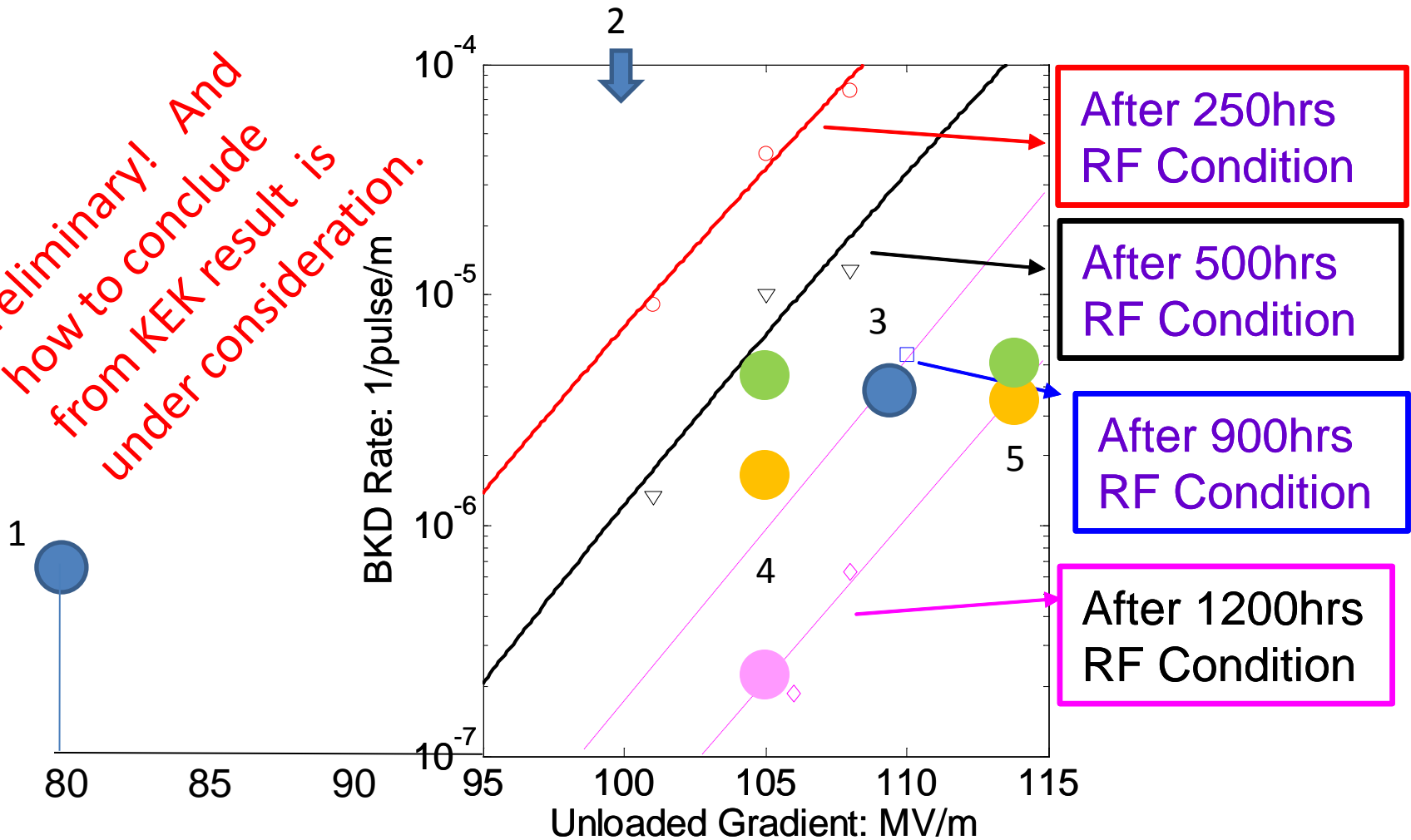




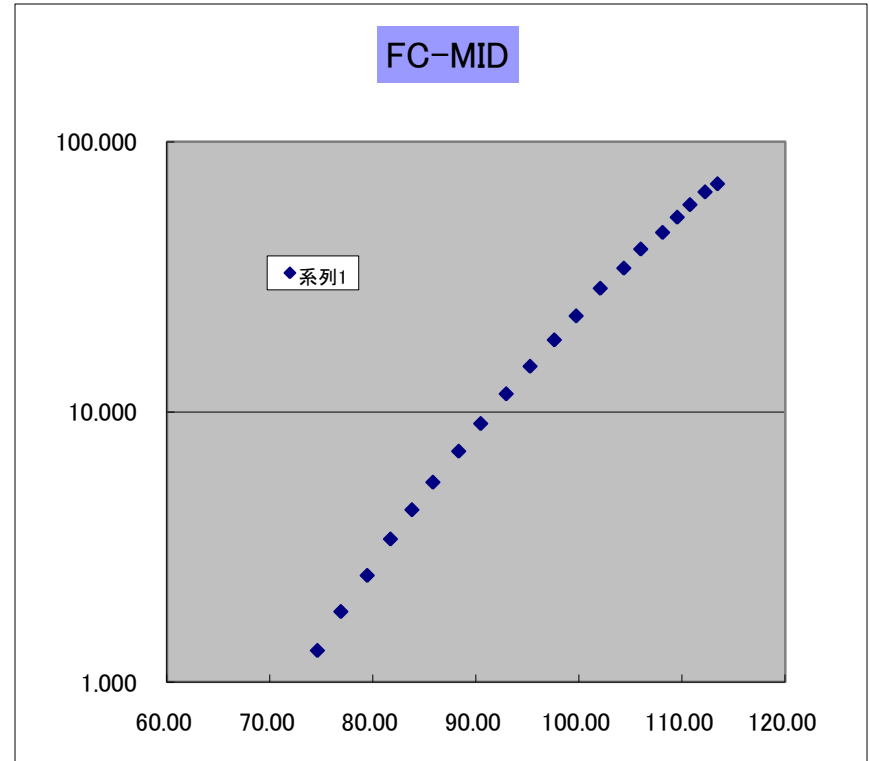
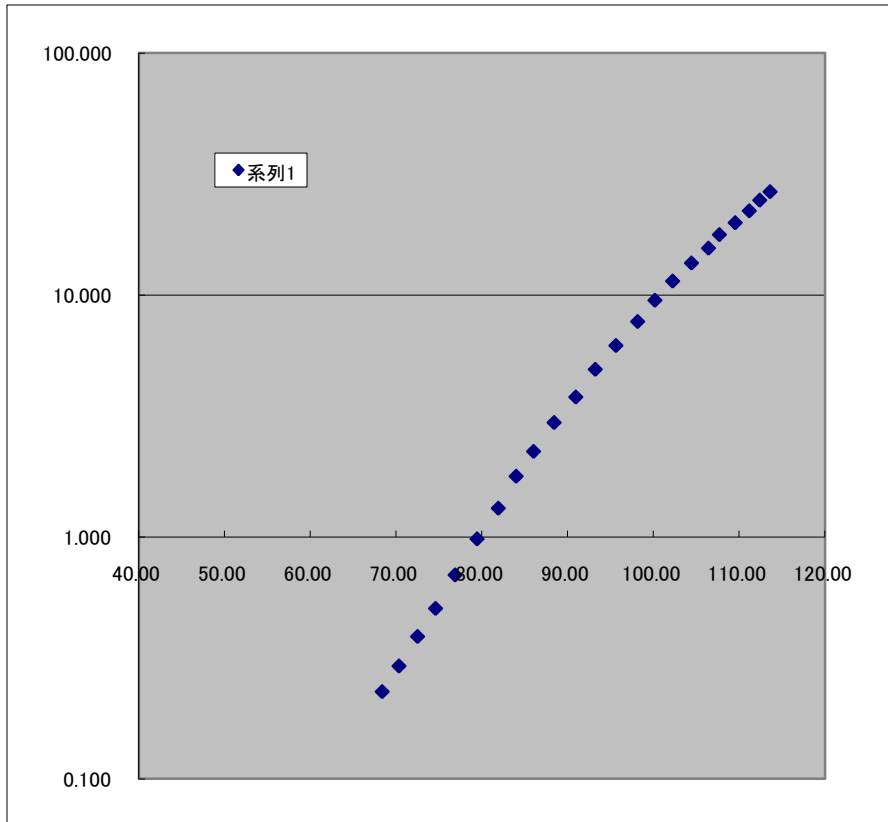


KEK #2 breakdown data points superimposed in SLAC data on #1 (from Sami)

*Preliminary! And
how to conclude
from KEK result is
under consideration.*

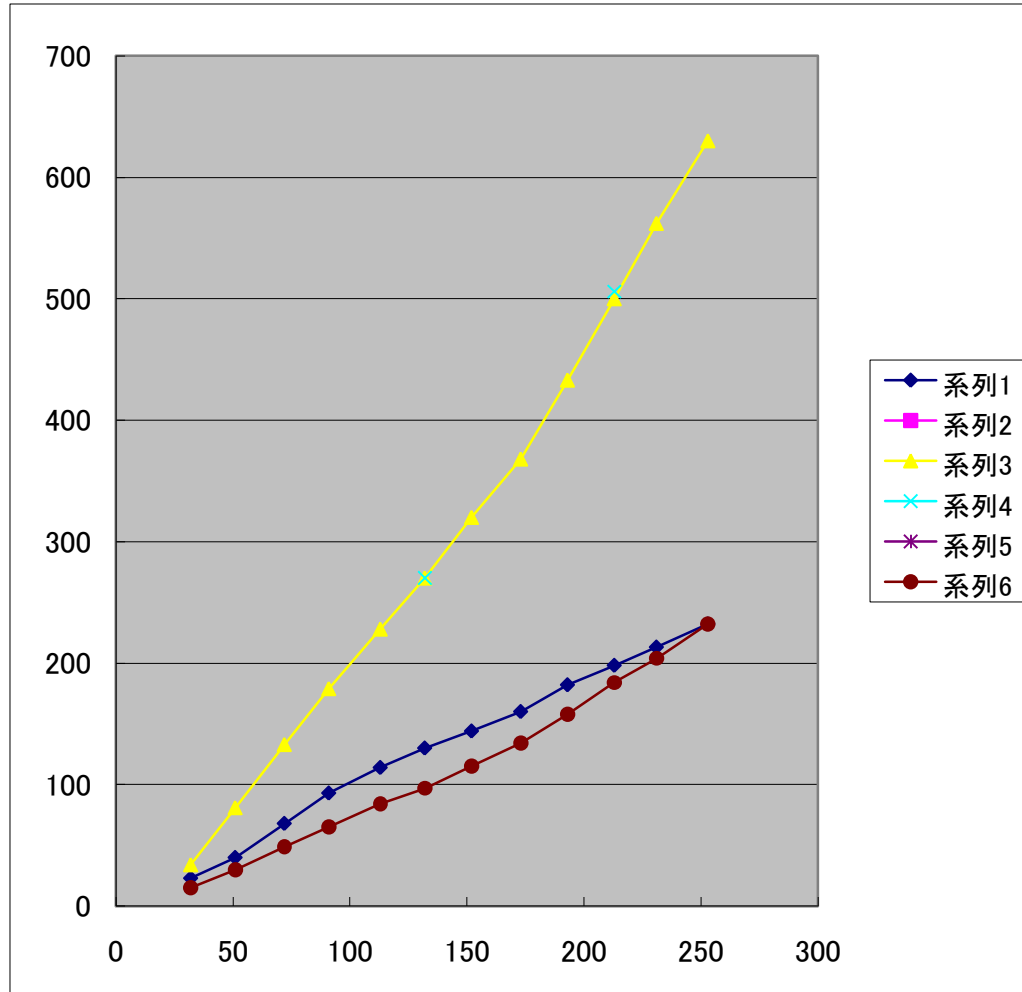


Dark current measurement 090414



No change in magnitude w.r.t. the last data taken by Mathias in early March

090414 width dependence



Conclusion on 090424

- We keep run T18 for a month or so
 - Wider pulse to get breakdown rate
 - on Eacc and on width
 - Obtaining various basic operation conditions
 - Power monitor / oscilloscope pulse / DPO reading
 - check transmission of waveguide by changing waveguide temperature
 - Dark current spectrum (<5MeV?) and other features
 - Sophistication of every pulse recording
 - Etc
- Switch to quadrant in sometime May