

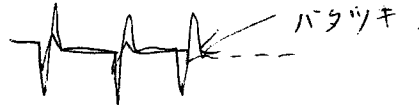
2009/3/10 深夜 三浦 古川

Linac e-

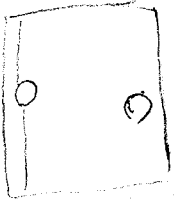
KEKB e-

montek AA1

オシロスコピー 画面



大沢氏に連絡



SC61 A1

φ = 2.444 m

径 5 mm

ΔP/P = 0.2%

~~170-系は~~
~~114の7-7LがEとL. EにLを接続板付.~~

古川氏の散乱後の

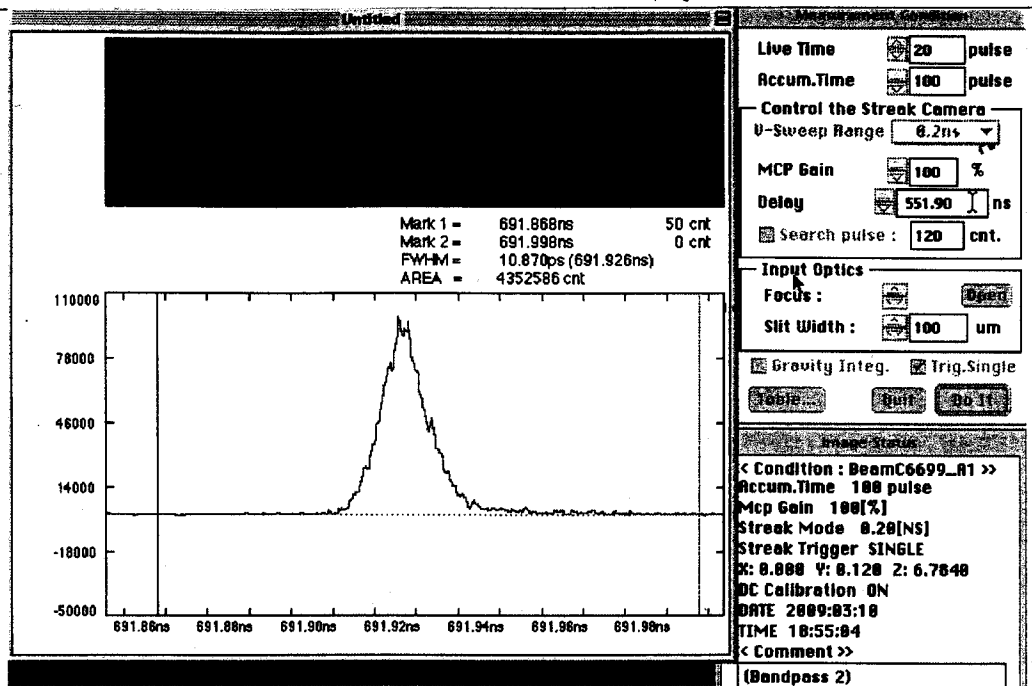
T04がエッジにL2いる。

入力の114個の7-7L EとL2. 信号を遅らせてL2を改善

2-1, 1-8 仕様

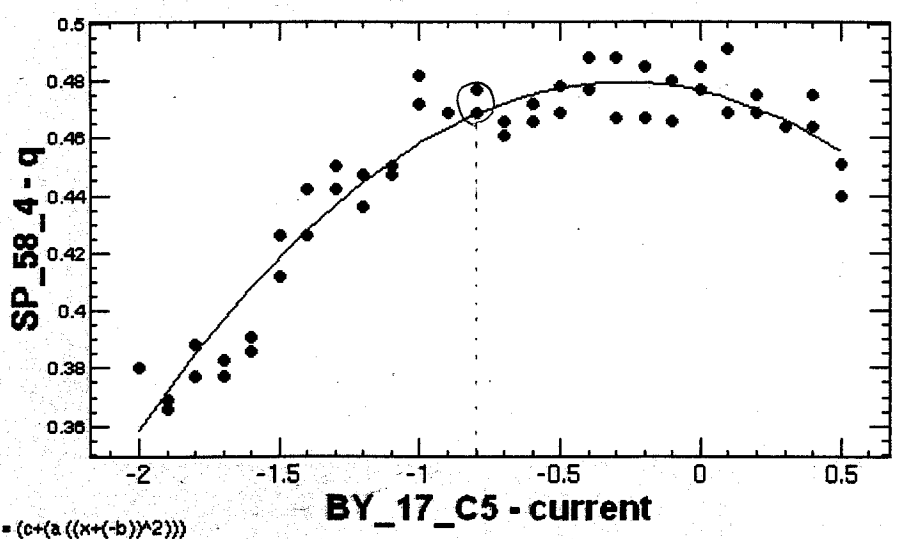
2-1-1 2784:9

J-7-72 の五に観測した92. ストリークカメラの調整
 → 問題なし



File Edit Window 03/10/2009 19:25:27 Help

ChiSquare = .00578 Goodness = .47313
 a = -.04060 +/- .00300 b = -.27423 +/- .04297 c = .47947 +/- .00205



BY_17_C5vsSP_58_4 on 172.19.66.32:0.0

File Edit Window

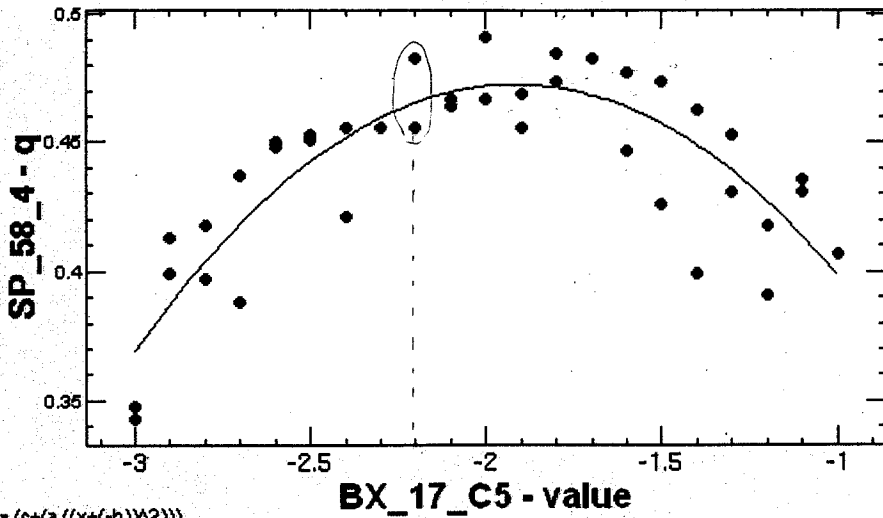
03/10/2009 19:25:42 Help

ChiSquare = .01398 Goodness = .46988

a = -.08805 +/- .00894

b = -1.9174 +/- .02865

c = .47269 +/- .00436



BX_17_C5vsSP_58_4 on 172.19.66.32:0.0

File Edit Window

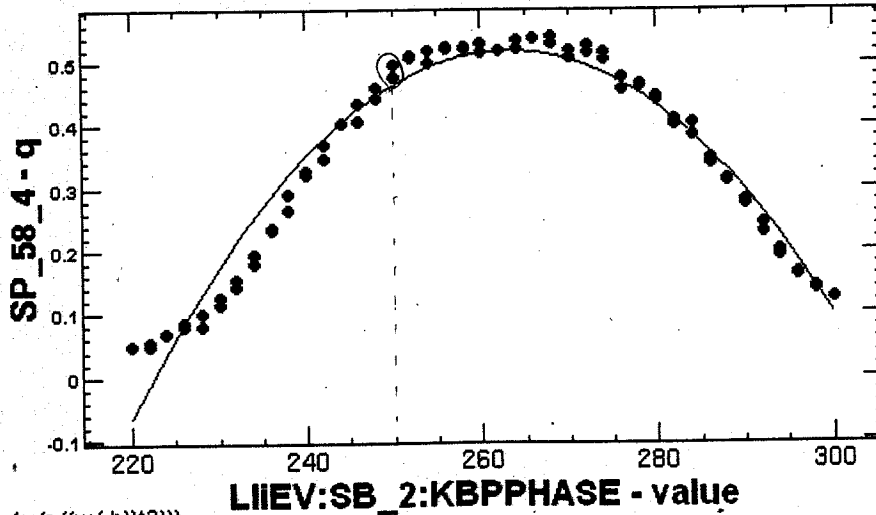
03/10/2009 19:24:14 Help

ChiSquare = .09508 Goodness = .47884

a = -3.1E-4 +/- 7.66E-6

b = 263.203 +/- .27128

c = .51878 +/- .00571

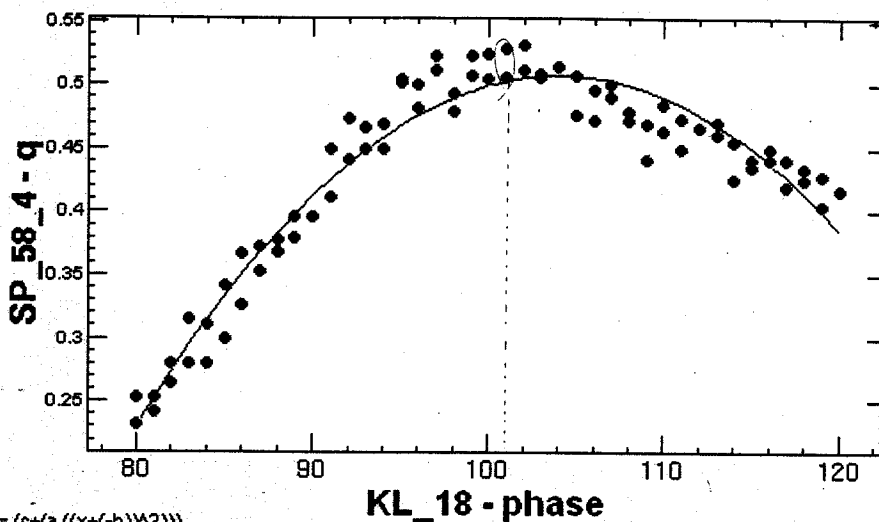


LIEV:SB_2:KBPPHASEvsSP_58_4 on 172.19.66.32:0.0

File Edit Window

03/10/2009 19:44:13 Help

ChiSquare = .03204 Goodness = .47884
 a = -4.8E-4 +/- 1.78E-5 b = 104.058 +/- .24774 c = .50731 +/- .00322

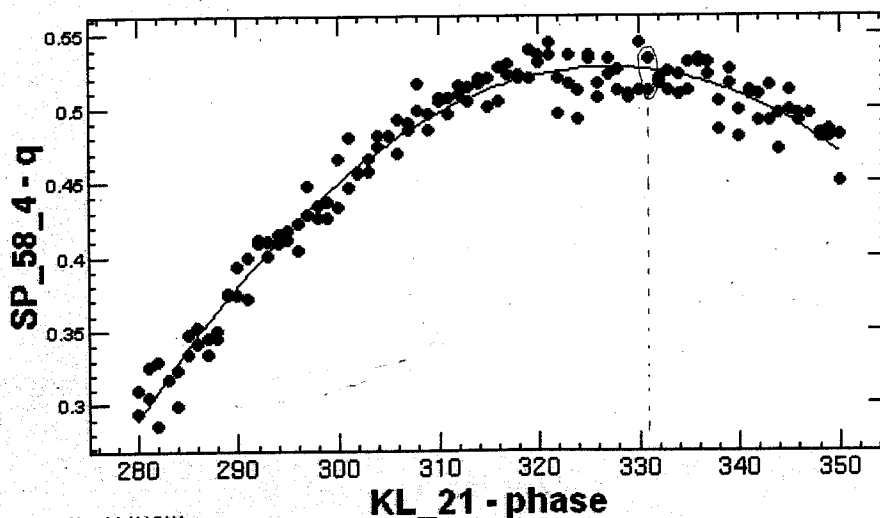


KL_18vsSP_58_4 on 172.19.66.32:0.0

File Edit Window

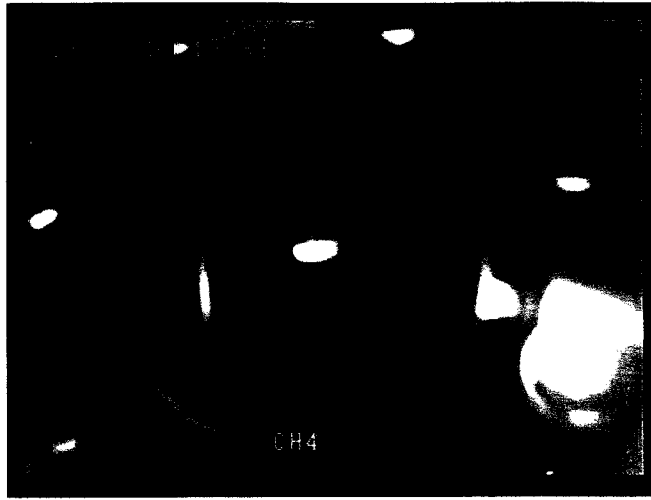
03/10/2009 19:39:04 Help

ChiSquare = .02259 Goodness = .48405
 a = -1.1E-4 +/- 2.85E-6 b = 326.894 +/- .39618 c = .52769 +/- .00147



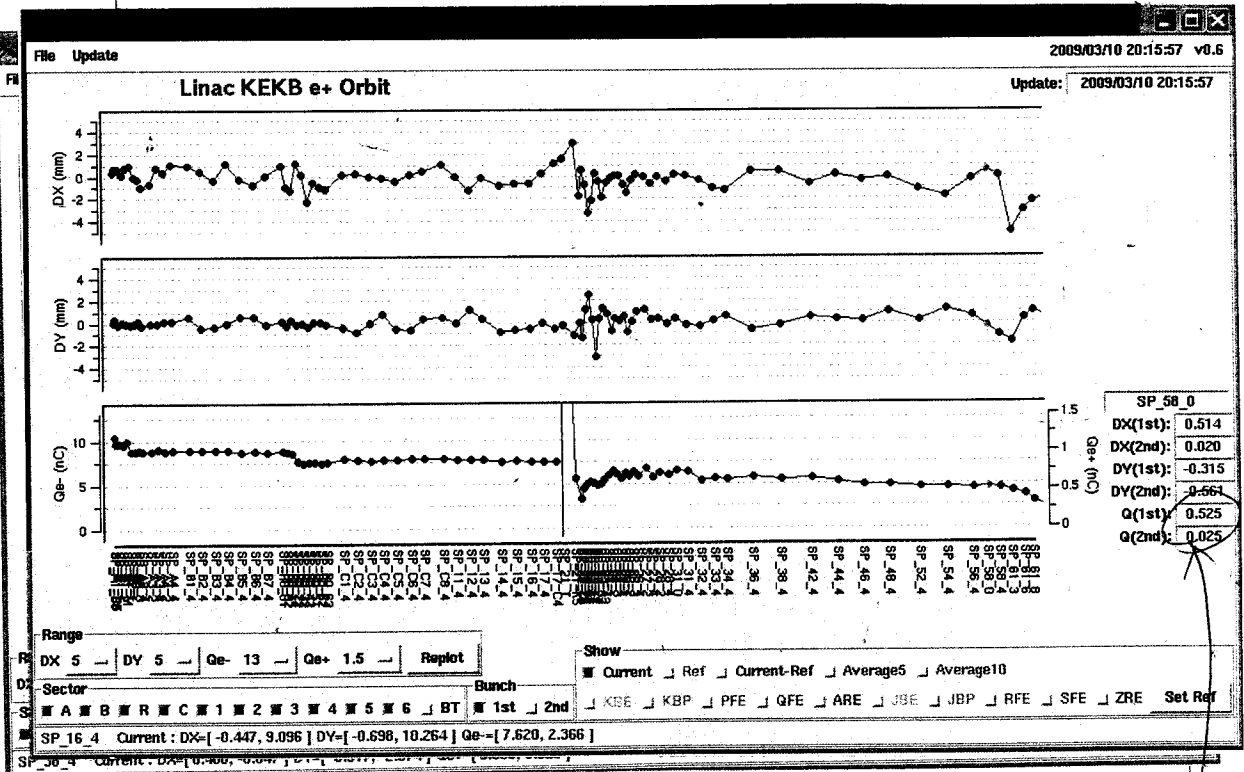
KL_21vsSP_58_4 on 172.19.66.32:0.0

165

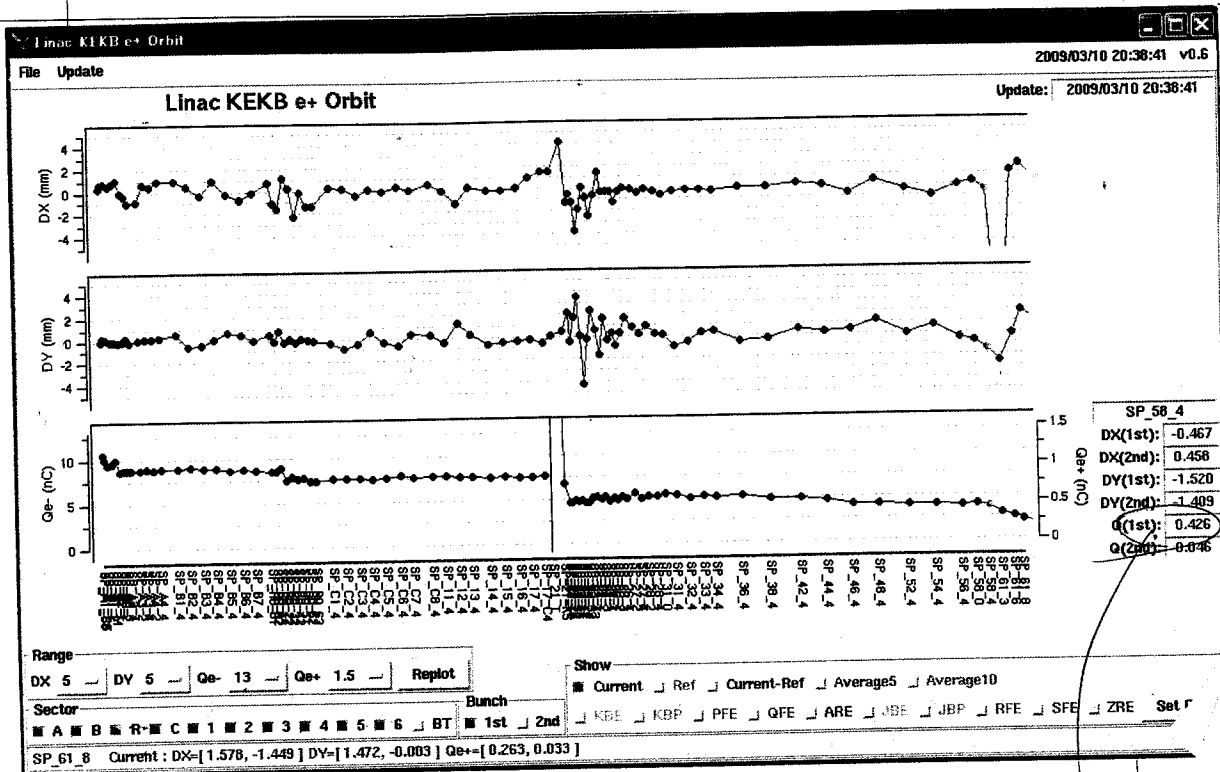


SC-21-T

撮長 0-1.75 2.98
 Q-Mag 変化
 広くは
 比-1.5 透磁率に
 変化あり



調整後



調整前

SB2 → phase の 調整 した。

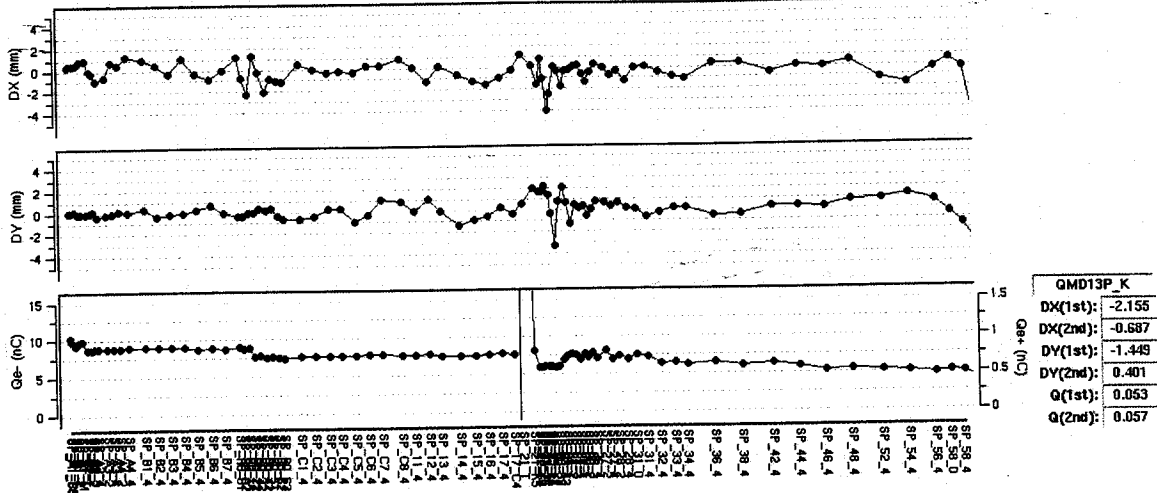
109/3/11
167

e+ up study

飯田 水川

Linac KEKB e+ Orbit

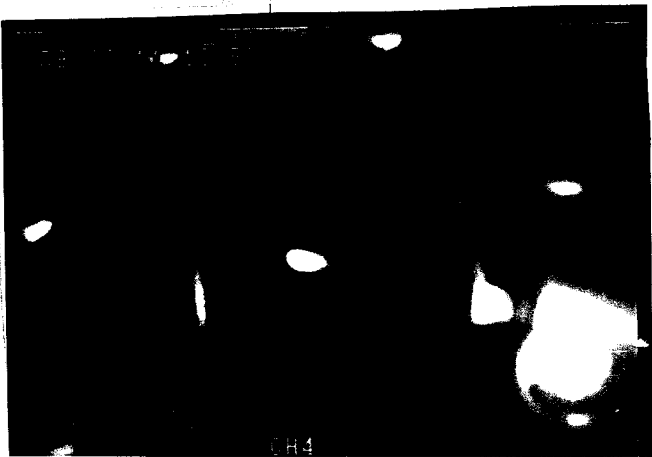
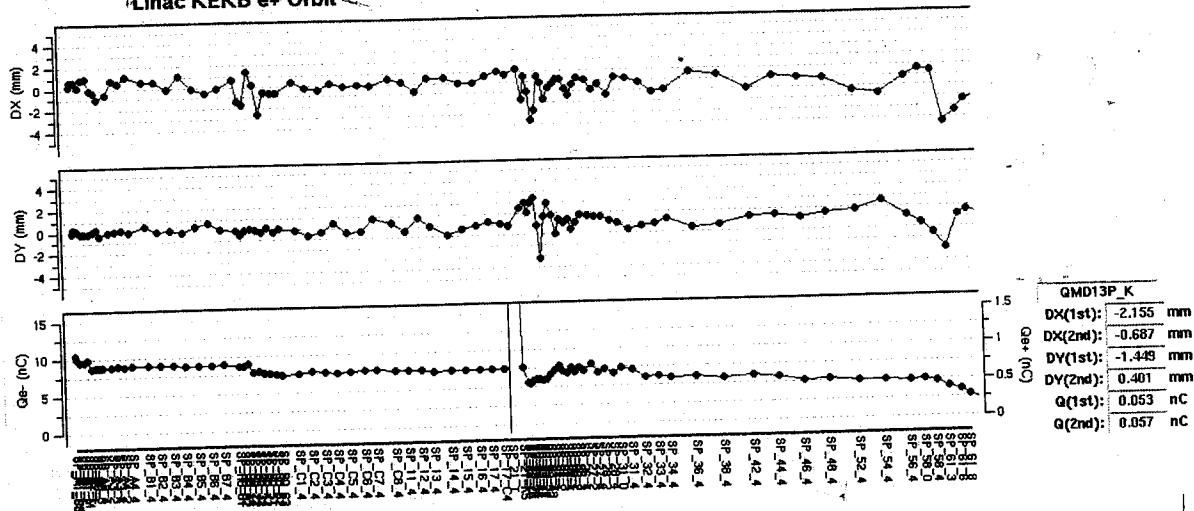
Update: 2009/03/11 11:17:57



SB-B 83° → 78°
Energy knob (Arc) R & KBP 1.7009 → 1.7180
1079-Steering H. E 30-84 調整

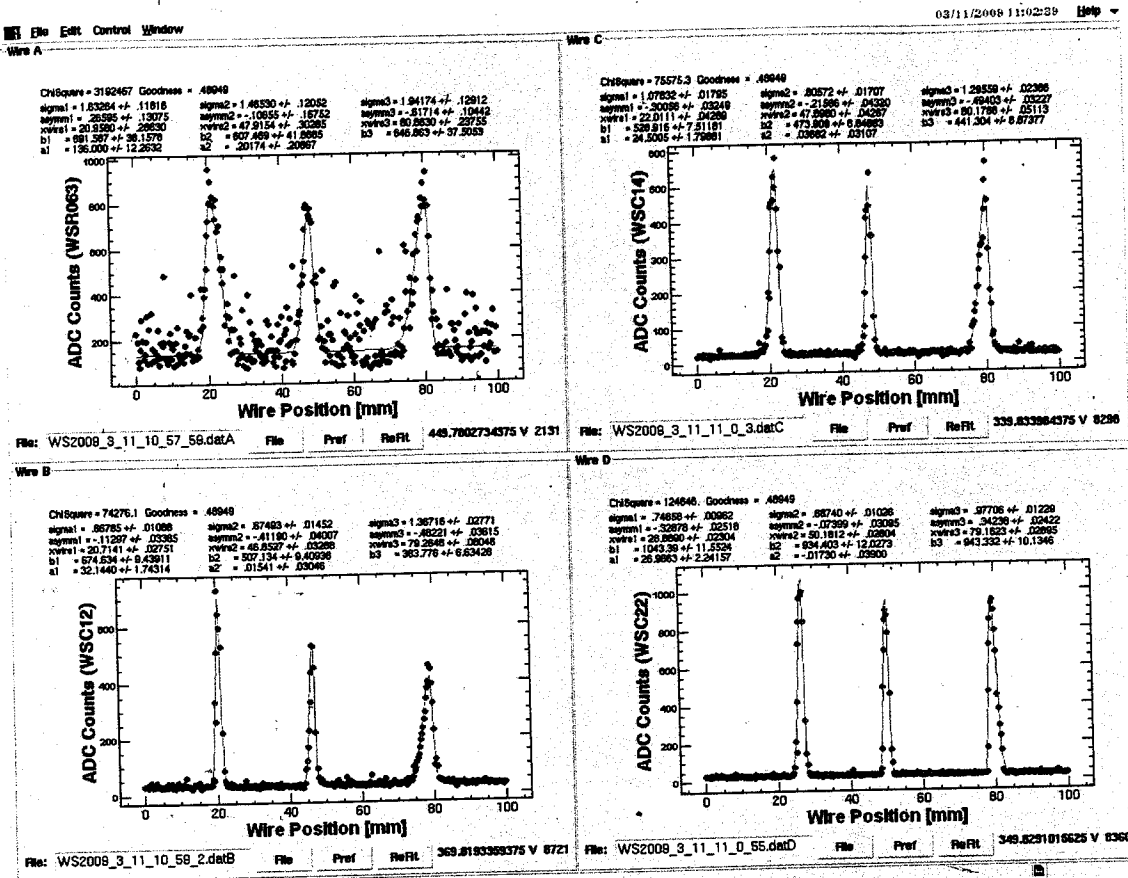
Linac KEKB e+ Orbit

Update: 2009/03/11 10:53:21



CET-
LER
Matching
→

Matching 0.5. 2009 03/11 - 11:06:19 1=save
 " 後 " " 17:19:04 1=save
 17



Main Application Area

File Edit Window 03/11/2009 11:02:58 Help

Wire Scan Optics Calculate Matching

X phase space at Wire A X phase space at Matching Point

Y phase space at Wire A Y phase space at Matching Point

Results of Measurement

β_x @ QDC24 [m]	6.070	β_y @ QDC24 [m]	13.696
α_x @ QDC24	-936	α_y @ QDC24	-872
ϵ_x [m]	7.2592E-8	ϵ_y [m]	5.8931E-8
γ_{Cx} [r.mm.mrad]	289.319	γ_{Cy} [r.mm.mrad]	234.879
Bmag x:	1.088	Bmag y:	1.056
eBmag x:	7.8884E-8	eBmag y:	6.2244E-8
γ_{CBmag} x:	814.895	γ_{CBmag} y:	248.875

Optics Plot

Matching Conditions

QDC14 QFC34: β_x	60.00	12.048442803038
QDC14 QFC34: β_y	60.00	12.376108237847

Wire Selection

3-wire:ABC 3-wire:ABD 3-wire:ACD 3-wire:BCD

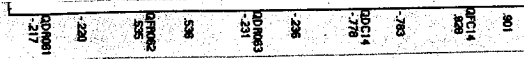
4-wire:ABCD

NonLinearFit Err(mass), nC n: 10 Err(opt) (%): 0

Calculate Optics Save All Parameters

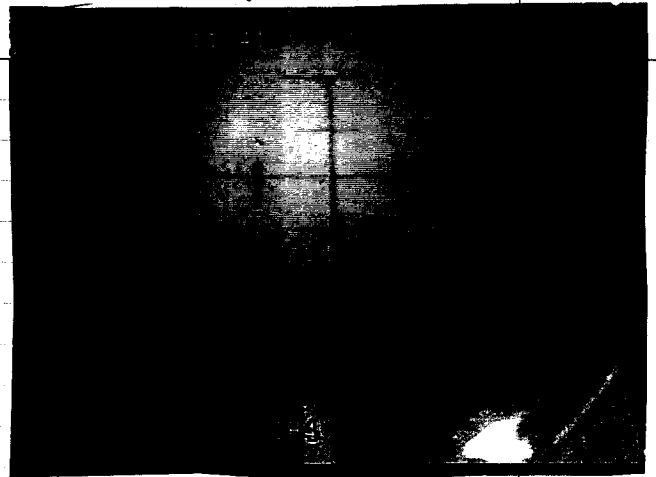
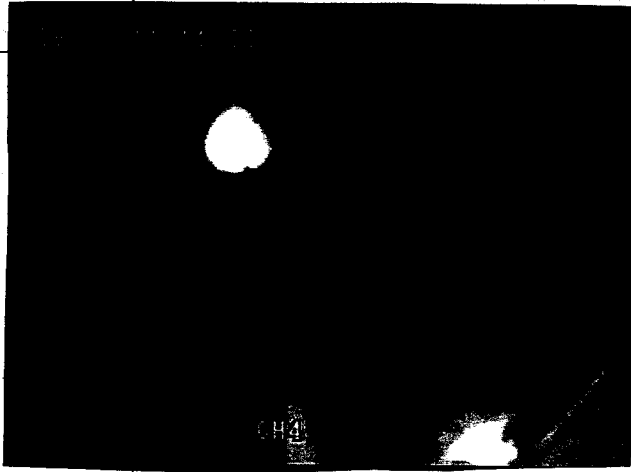
All informations are SAVED to \data1\KEKB\Wire\LINAC\sector\Position\data\MatchResult\WSLC_2009_3_11_2_9

Set L to A:
 粒子の動き可
 ↓



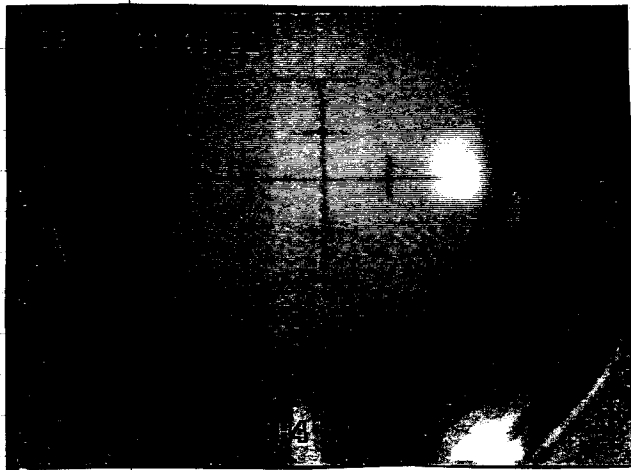
target を 扱 < と。
↓ 1 玉 残 3。

↓ 玉 2 残 3



SC-21-45

↑ ↑
e⁻ e⁺
172e-6b?



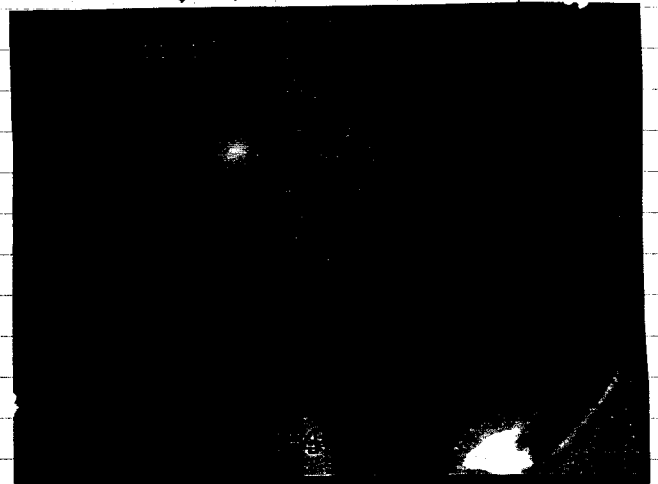
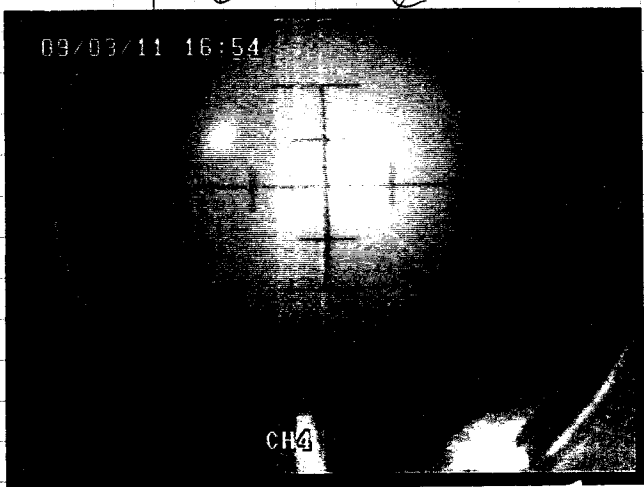
BX 1705

-1.9 A → +0.5 A

穴 を 通 った と 思 っ た
172e-6b

↑ 穴 を 通 った と 思 っ た
↓ 穴 の position

↓ Y/L 1705 205E

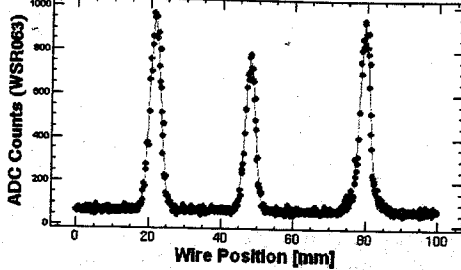


File Edit Control Window

03/11/2009 12:44:12 Help

Wire A

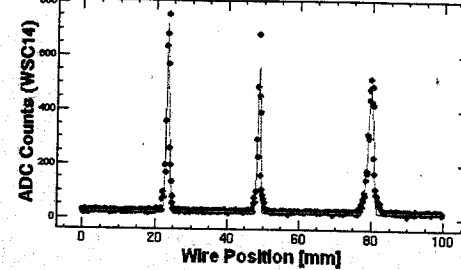
ChiSquare = 309022. Goodness = 49147
 signal = 1.48934 +/- 0.1706 sigma2 = 1.35214 +/- 0.2333 sigma3 = 1.37874 +/- 0.1885
 asym1 = 0.5330 +/- 0.2228 asym2 = 0.1903 +/- 0.3112 asym3 = -0.1032 +/- 0.2510
 xval1 = 21.5730 +/- 0.2428 xval2 = 47.8578 +/- 0.5153 xval3 = 79.9520 +/- 0.4231
 b1 = 678.572 +/- 6.5332 b2 = 891.722 +/- 6.8338 b3 = 890.161 +/- 6.8865
 a1 = 65.9818 +/- 2.47326 a2 = 0.6121 +/- 0.4228 a3 = 0.5009 +/- 0.0987



File: WS2009_3_11_12_27_58.datA File Pref ReFit 549.7314453125 V 2135

Wire C

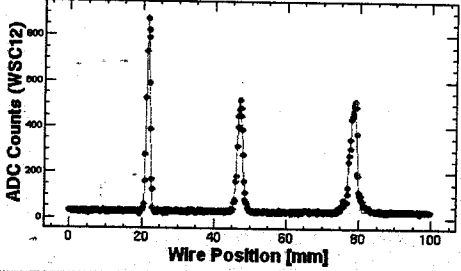
ChiSquare = 180106. Goodness = 49147
 signal = 41832 +/- 0.0798 sigma2 = 39185 +/- 0.0658 sigma3 = 73191 +/- 0.1533
 asym1 = -0.0730 +/- 0.0835 asym2 = -0.0188 +/- 0.0257 asym3 = -0.2157 +/- 0.0424
 xval1 = 29.5108 +/- 0.0305 xval2 = 48.8253 +/- 0.0445 xval3 = 79.3612 +/- 0.0813
 b1 = 707.172 +/- 11.0928 b2 = 533.738 +/- 11.5255 b3 = 472.988 +/- 6.48004
 a1 = 18.0000 +/- 1.51028 a2 = 0.0403 +/- 0.2809 a3 = 0.5009 +/- 0.0987



File: WS2009_3_11_12_30_45.datC File Pref ReFit 399.8046875 V 6301

Wire B

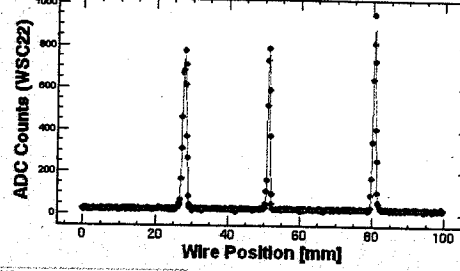
ChiSquare = 54121.9 Goodness = 49147
 signal = 48741 +/- 0.0410 sigma2 = 70017 +/- 0.0887 sigma3 = 80038 +/- 0.0987
 asym1 = 0.4535 +/- 0.1745 asym2 = -0.5369 +/- 0.2578 asym3 = -28204 +/- 0.2190
 xval1 = 21.7074 +/- 0.1041 xval2 = 47.2205 +/- 0.2211 xval3 = 79.5295 +/- 0.0414
 b1 = 961.058 +/- 6.23778 b2 = 487.173 +/- 5.20085 b3 = 485.457 +/- 4.80408
 a1 = 27.6150 +/- 0.7404 a2 = 0.4719 +/- 0.1687 a3 = 0.5009 +/- 0.0987



File: WS2009_3_11_12_37_14.datB File Pref ReFit 448.7982734375 V 7727

Wire D

ChiSquare = 45736.8 Goodness = 49147
 signal = 53179 +/- 0.0452 sigma2 = 32985 +/- 0.0341 sigma3 = 38547 +/- 0.0338
 asym1 = -0.0702 +/- 0.1788 asym2 = 0.4298 +/- 0.2143 asym3 = -0.3258 +/- 0.1773
 xval1 = 29.0038 +/- 0.1151 xval2 = 51.3288 +/- 0.0885 xval3 = 80.5519 +/- 0.0838
 b1 = 758.308 +/- 5.54744 b2 = 788.788 +/- 7.03707 b3 = 860.508 +/- 6.50938
 a1 = 18.0000 +/- 0.9841 a2 = 0.1016 +/- 0.1530 a3 = 0.5009 +/- 0.0987



File: WS2009_3_11_12_38_42.datD File Pref ReFit 379.814453125 V 8362

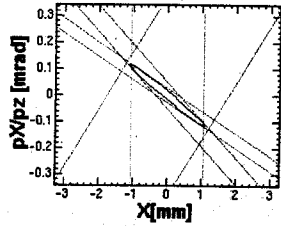
Main Application Area

File Edit Window

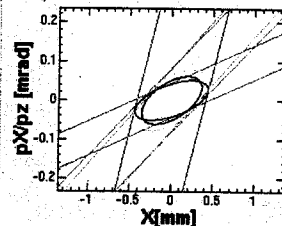
03/11/2009 12:44:38 Help

Wire Scan: Optics Calculate Matching

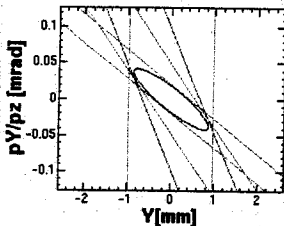
X phase space at Wire A



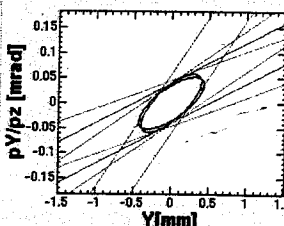
X phase space at Matching Point



Y phase space at Wire A



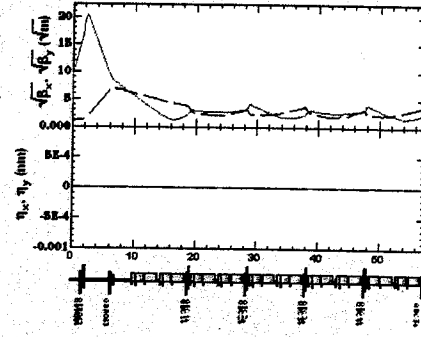
Y phase space at Matching Point



Results of Measurement

β_x @ADC24 [m] :	10.383	β_y @ADC24 [m] :	10.262
α_x @ADC24 :	-678	α_y @ADC24 :	-1.130
ϵ_x [m] :	1.8608E-8	ϵ_y [m] :	1.5540E-8
γ_{ϵ_x} [r.mm.mrad] :	73.634	γ_{ϵ_y} [r.mm.mrad] :	81.484
Bmag x :	1.109	Bmag y :	1.044
EBmag x :	2.0636E-8	EBmag y :	1.6227E-8
$\gamma_{EBmag x}$:	81.655	$\gamma_{EBmag y}$:	64.215

Optics Plot



Wire Selection

- 3-wire:ABC 3-wire:ABD 3-wire:ACD 3-wire:BCD
- 4-wire:ABCD
- NonLinearFit Err(mess), nC n: 0 Err(opt) (%): 0

Calculate Optics

Save All Parameters

All informations are SAVED to \data1\KEKB\Wire\LINAC\sector\Celetron\data\MatchResult\WSLC_2009_3_11_12_41_5