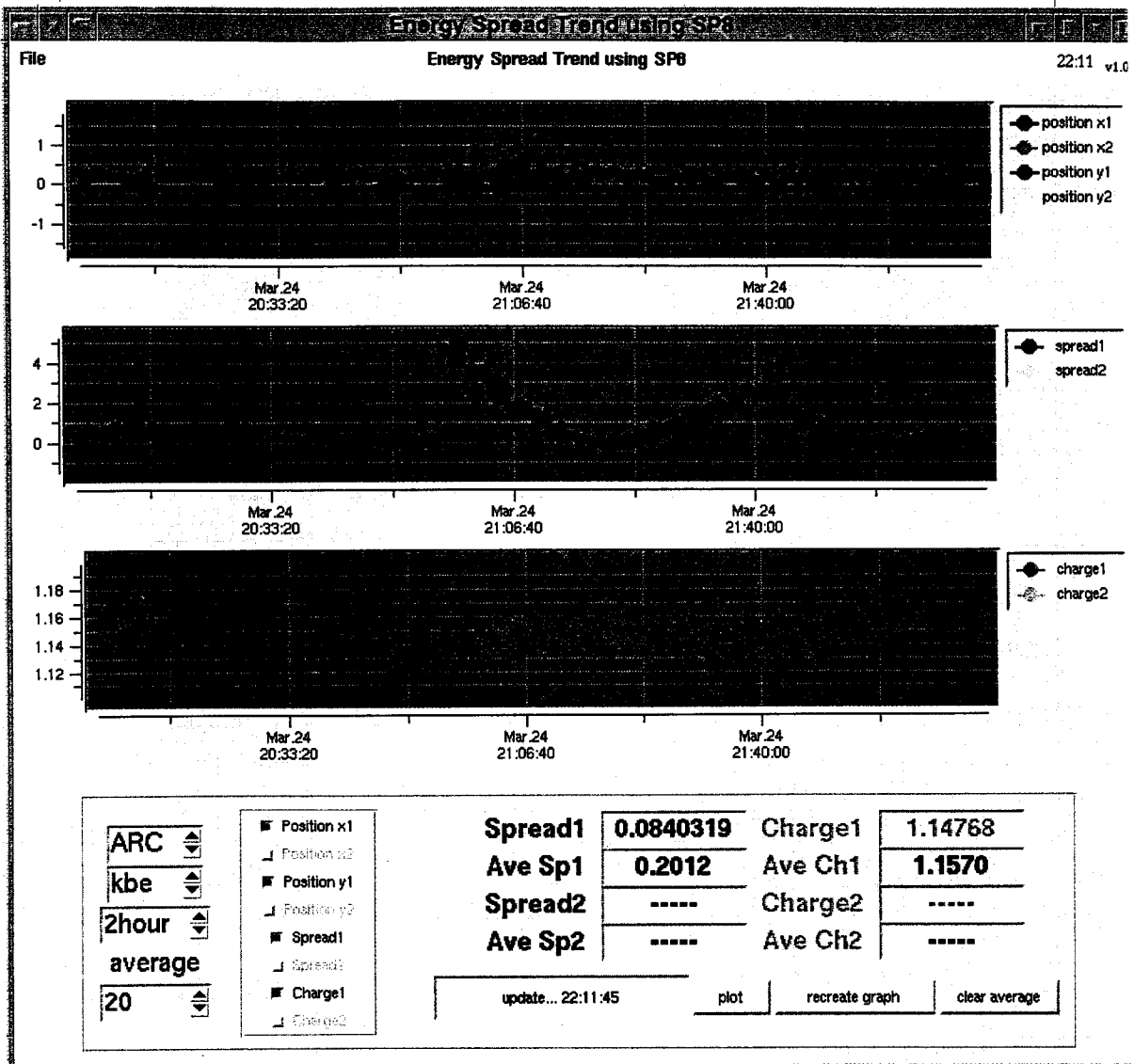


SB-B ϕ	Spread1	Time	Charge.
96.5°	-0.0106	21=57	1.19.
95.5°	0.4254	22=02	1.16

22=05

終了



5/28
18:42

ECS beam loss study

BM 611/6, BM 612/3/4/5 \pm of

SP584	1.094	1.119	1.119	1.096	1.111	1.111	1.105	1.109
SP616	1.019	1.041	1.046	1.027	1.028	1.031	1.018	1.026

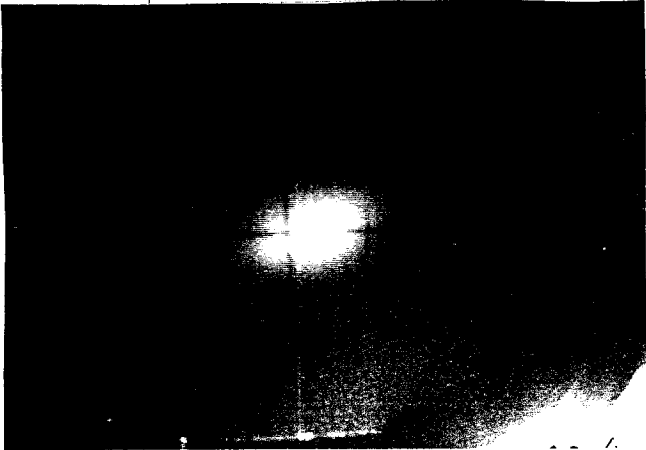
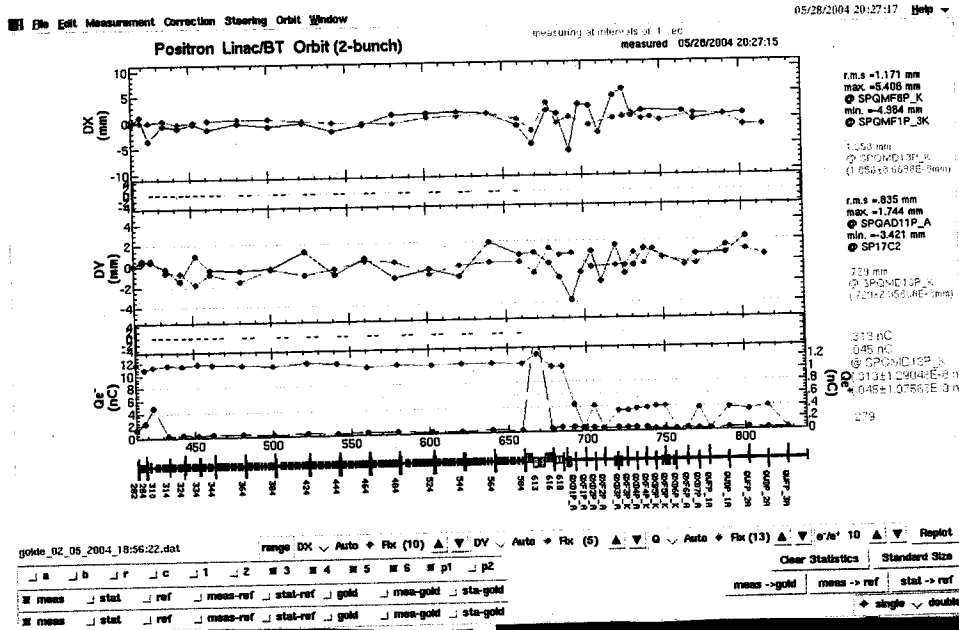
SP584	1.118	1.115
SP616	1.041	1.042

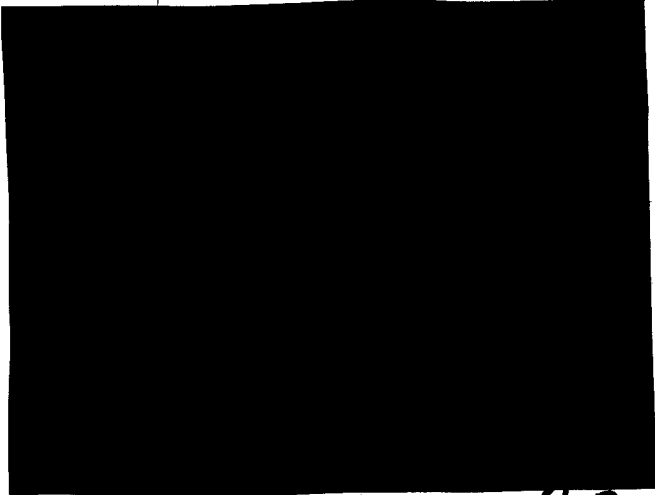
$$\frac{SP616}{SP584} = 0.930$$

才の gain を調節

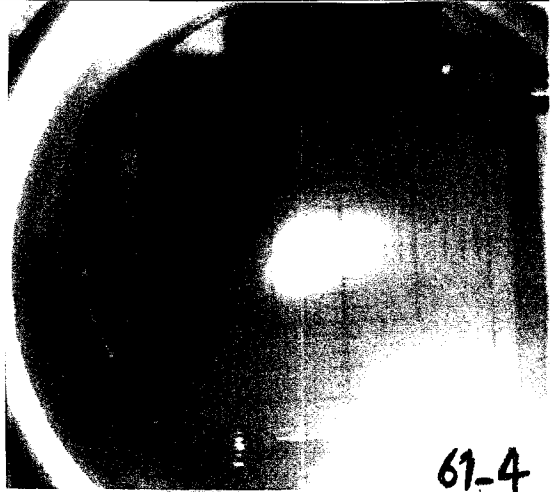
SP61F1	1.02
SP61F2	0.92

ECS e^- 3.5 GeV





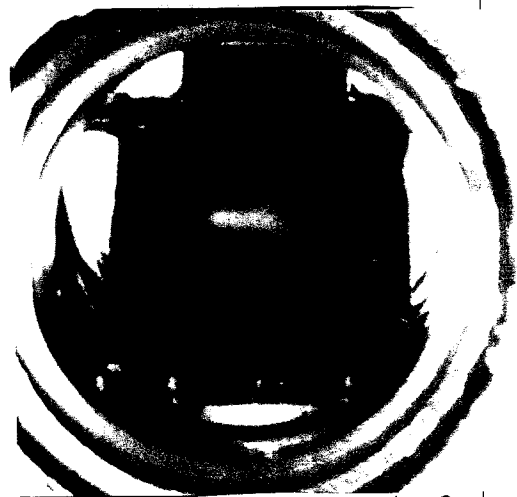
61-3



61-4



61-6



61-8



61-F2

20:45
 10³²-7 e⁻⁷
 ACC - Mode : data 221. mode. all
 RF - Phase : data 1420. Phase. all
 BT : data 3737. all

KEKB e⁻ 3.5 GeV
 ECS study 3

127

'04.6.22

KEKB e^- (8 GeV) τ . 4 GeV, 2.5 GeV λ 射

9:28

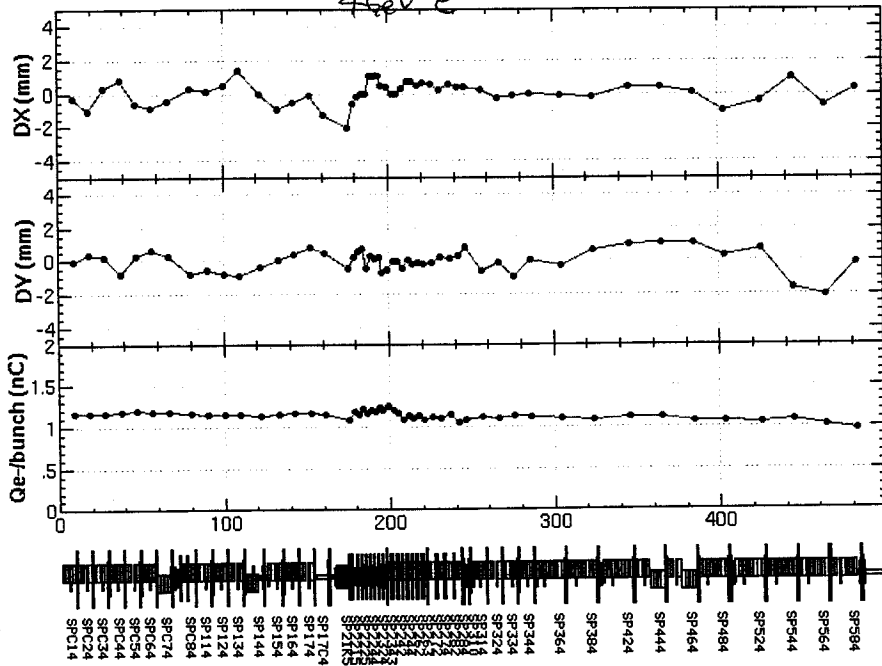
KEKB e^- λ 射

e^+ λ 射

4 GeV e^- (8 GeV α magnet 設定)

SB-4, SB-5 減速位相 ϵ 設定

4 GeV e^-

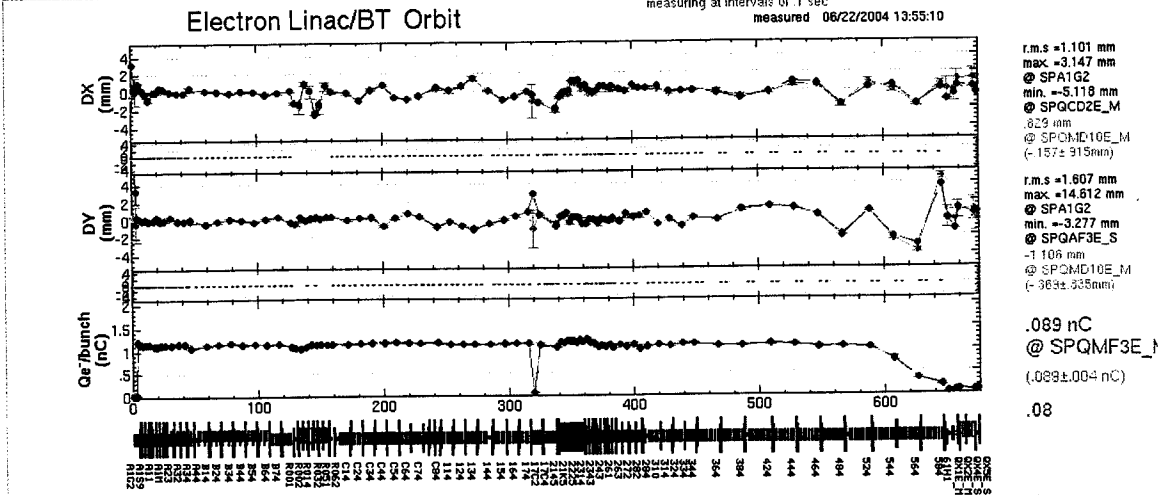


2.5 GeV e^- (8 GeV magnet 設定) SB-4, SB-5 KL35, 36, 37, 38

2.5 GeV e^-

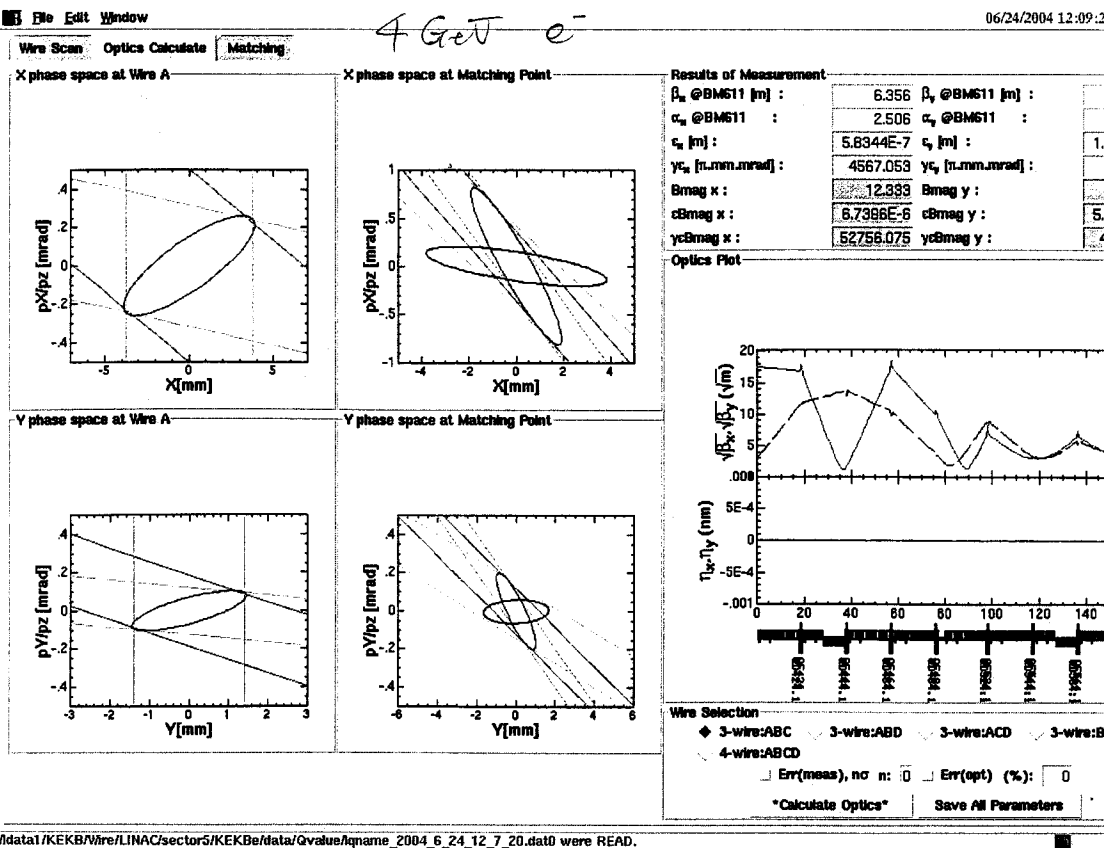
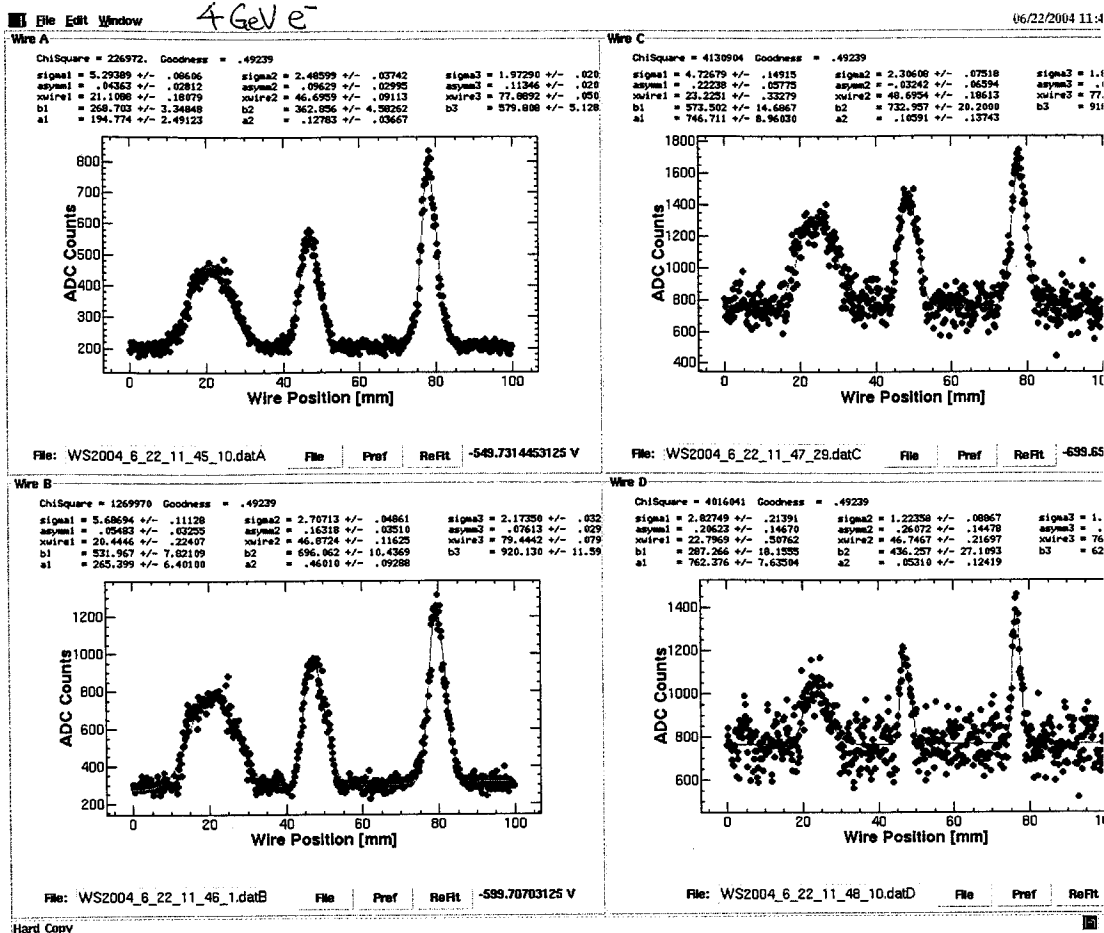
減速位相

File Edit Measurement Correction Steering Orbit Window 06/22/2004 13:55:11 Help



golde_02_05_2004_18:56:22.dat range DX \downarrow Auto \uparrow Fix (5) \uparrow \downarrow DY \downarrow Auto \uparrow Fix (5) \uparrow \downarrow Q \downarrow Auto \uparrow Fix (2) \uparrow \downarrow e⁻/e⁺ 4 \uparrow \downarrow Replot

meas stat ref meas-ref stat-ref gold mea-gold sta-gold Clear Statistics Standard Size meas -> gold meas -> ref stat -> ref

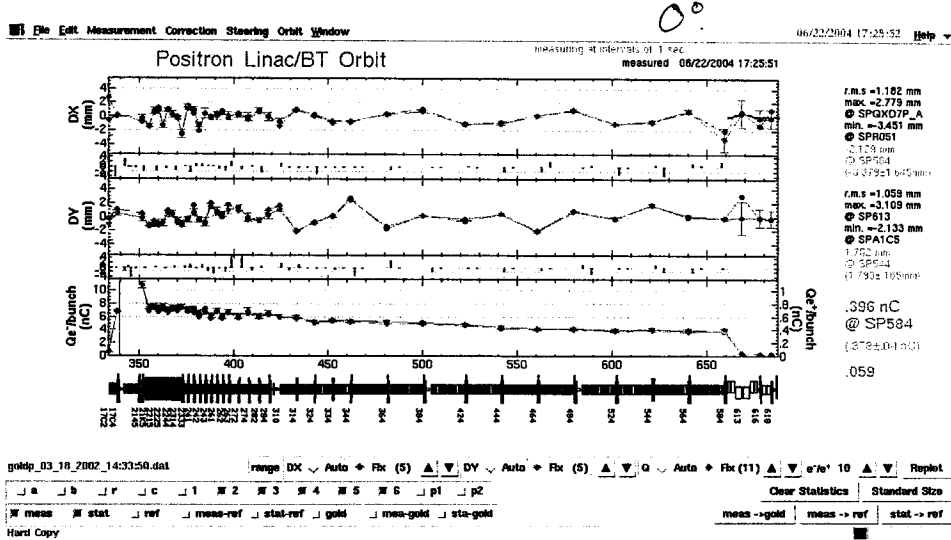


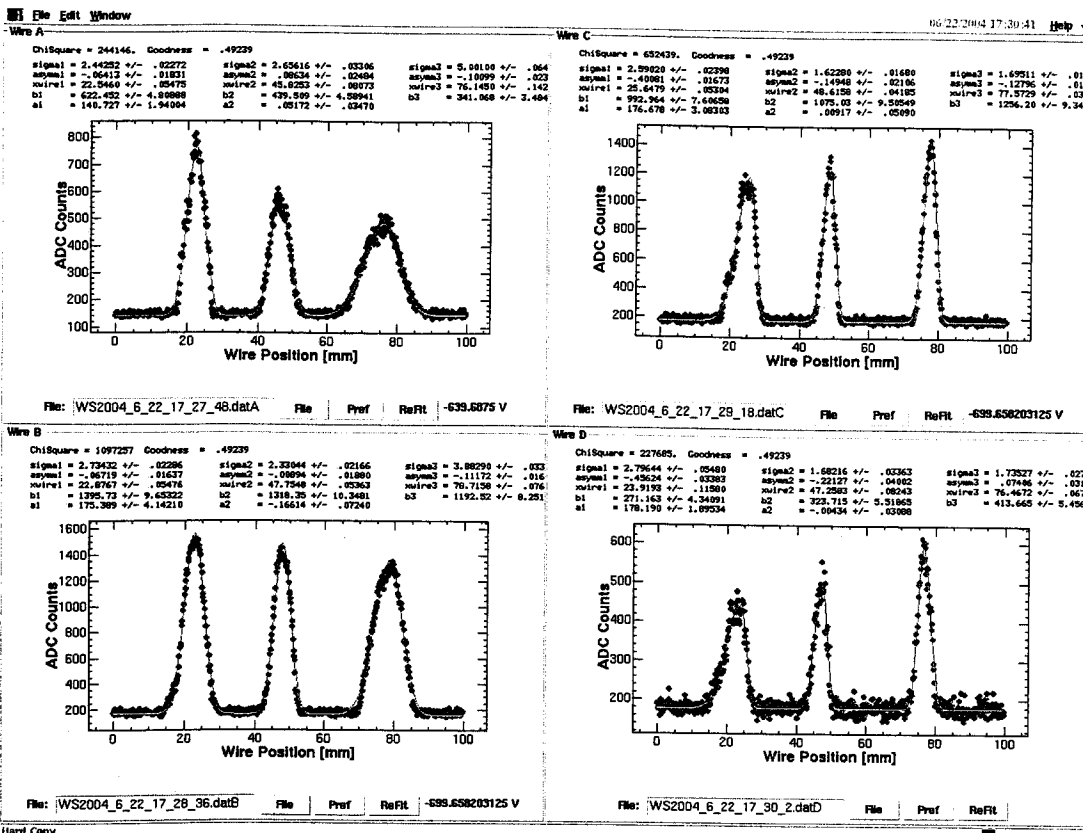
e^- 3.5 GeV (222電子)

SB-2, 3, 4, 5 位相 +180° } 222
 KL-21, KL-18 位相 +180° } e^- の位置をト.

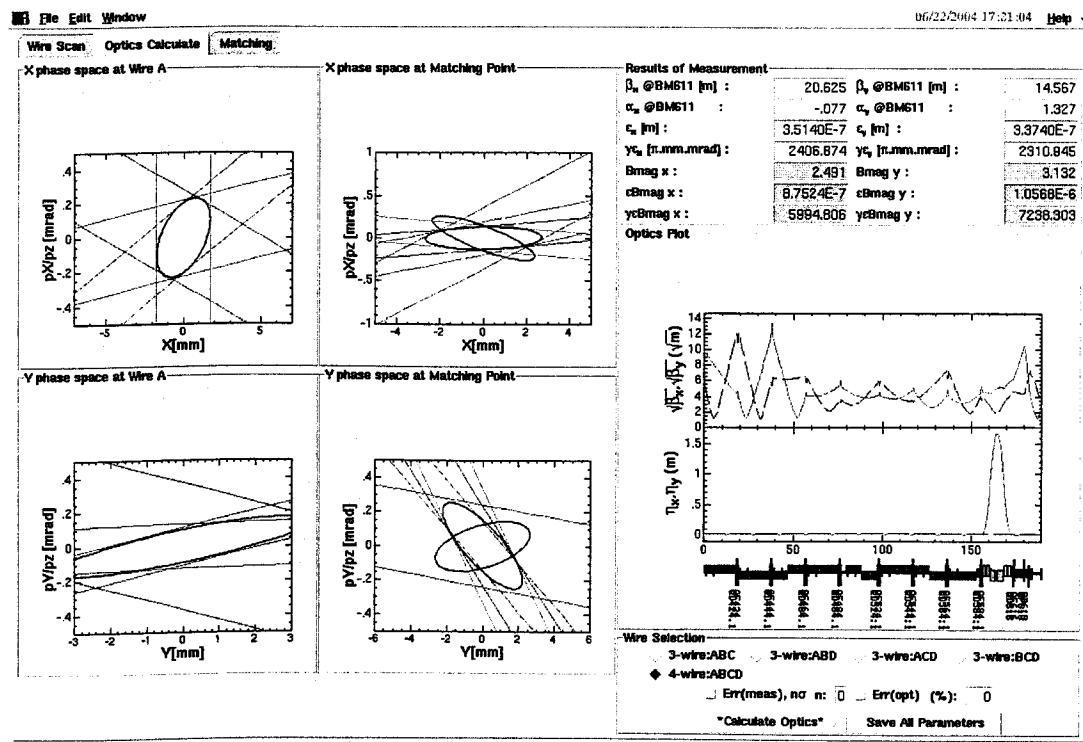
再度かたてく出たのて予て軌道を補正する。

(巻計算)。

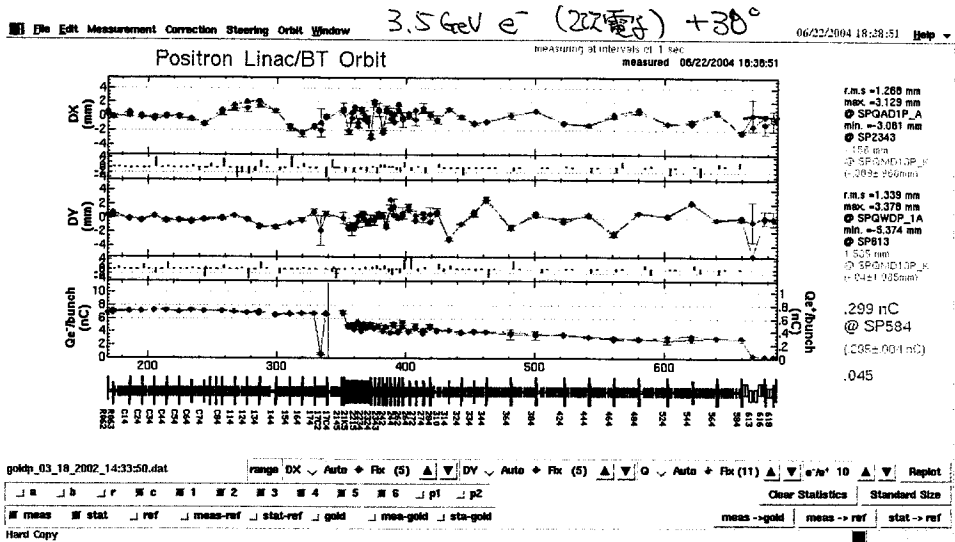


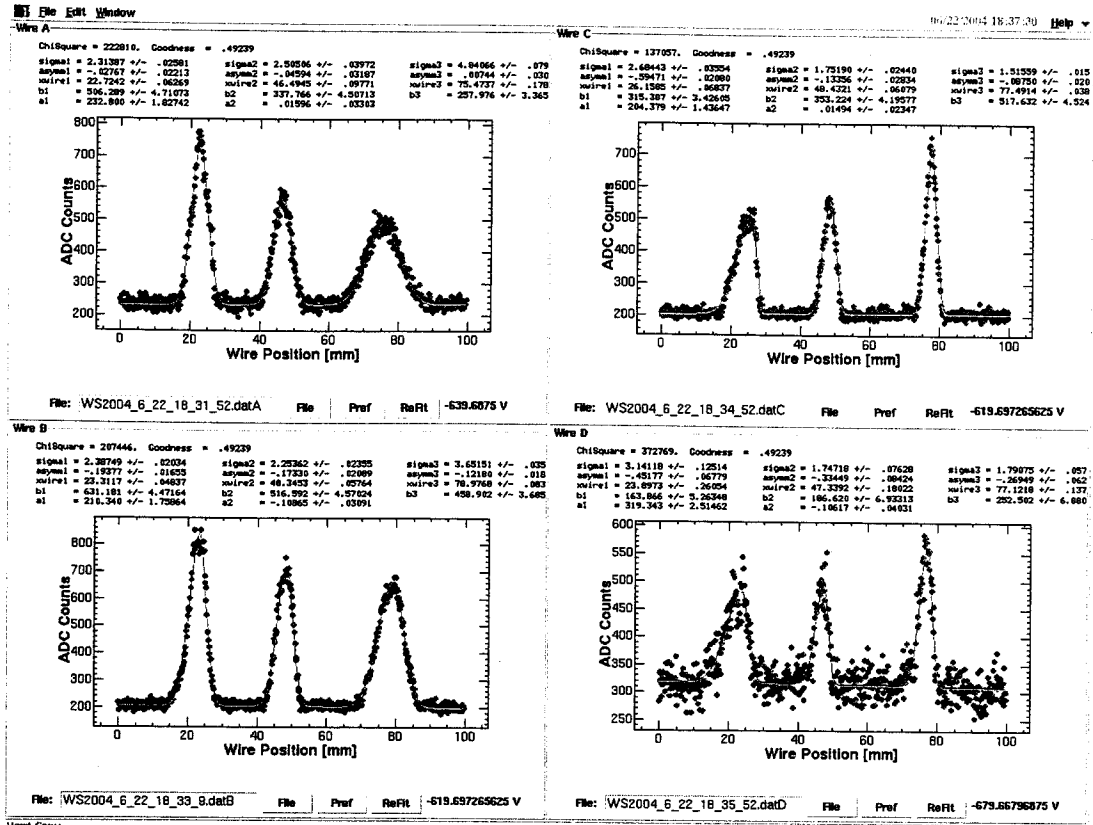


Hard Copy



Gmag values were SAVED to /ldata1/KEKB/Wire/LINAC/sectors/KEKBp/data/Gvalues/qname_2004_6_22_17_25_45.dat0





Hard Copy

