

11

File Edit Window

09/14/2005 18:08:14 Help

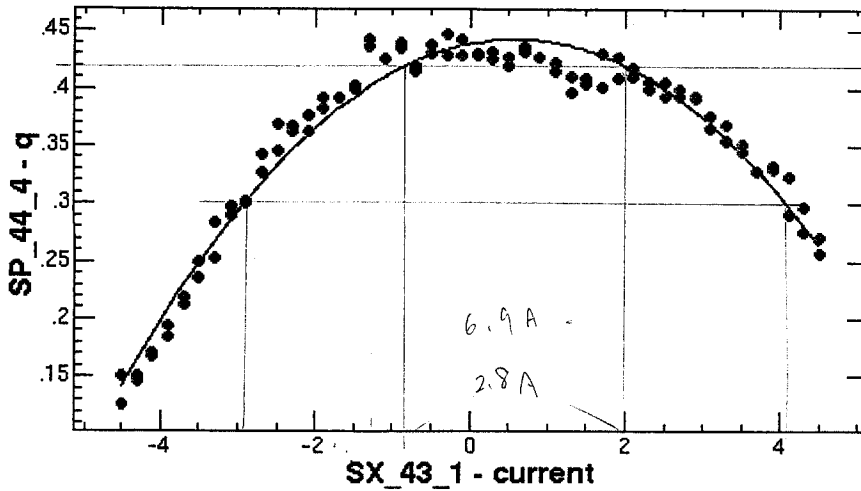
ChiSquare = .02248 Goodness = .48006

a = -.01168 +/- 2.63E-4

b = .57972 +/- .02974

c = .44295 +/- .00245

5% 0.42) 0.023



Function = (c+(a ((x+(-b))^2)))

Main Application Area

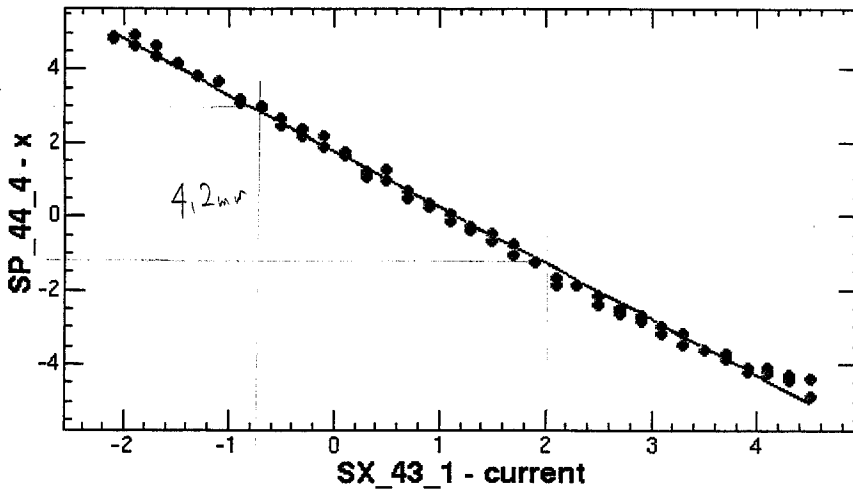
File Edit Window

09/14/2005 18:18:40 Help 4 Help

ChiSquare = 2.69404 Goodness = .47685

a = -1.5216 +/- .01249

b = 1.16272 +/- .01611



Function = (a (x+(-b)))

Hard Copy

4.2 mV

1σ ~ 0.6826 , 2σ ~ 0.9544 , 3σ 0.9974

File Edit Window

09/14/2005 18:29:06 Help

ChiSquare = .01122 Goodness = .48006

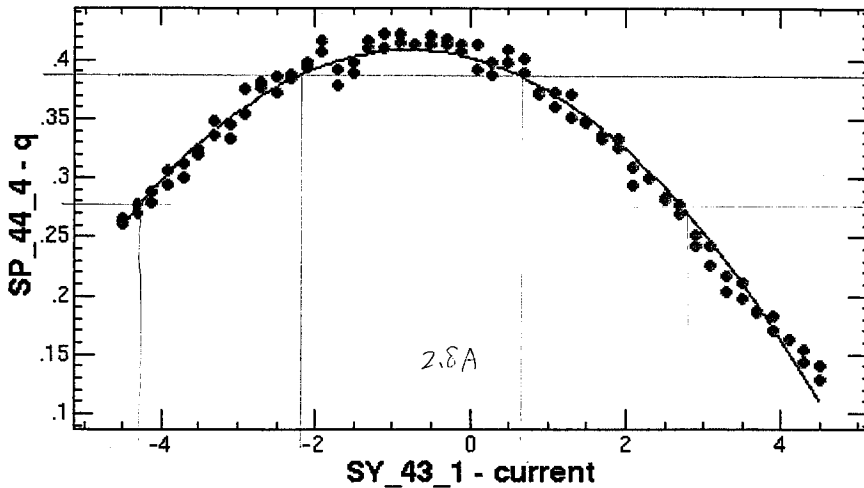
a = -.01076 +/- 1.86E-4

b = -.78400 +/- .02455

c = .40867 +/- .00171

5% σ = 0.388

0.021



Function = (c+(a ((x+(-b))^2)))

Hard Copy

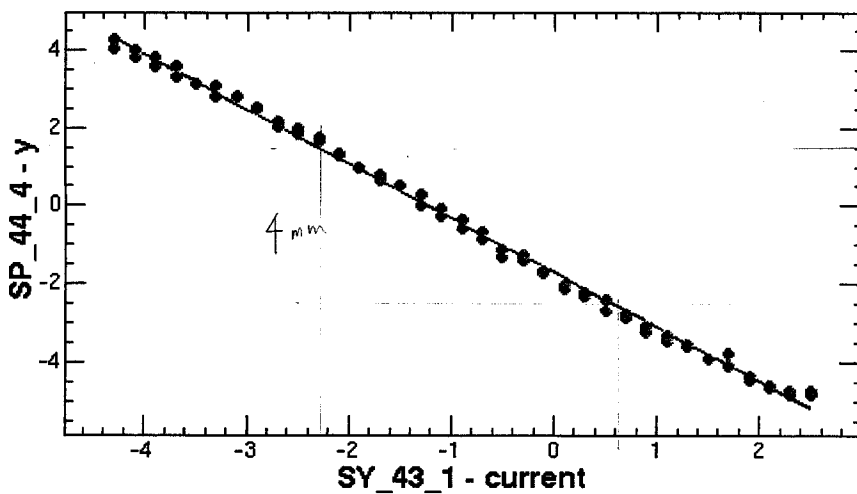
File Edit Window

09/14/2005 18:34:54 Help :36 Hel

ChiSquare = 1.74786 Goodness = .47719

a = -1.3958 +/- .00949

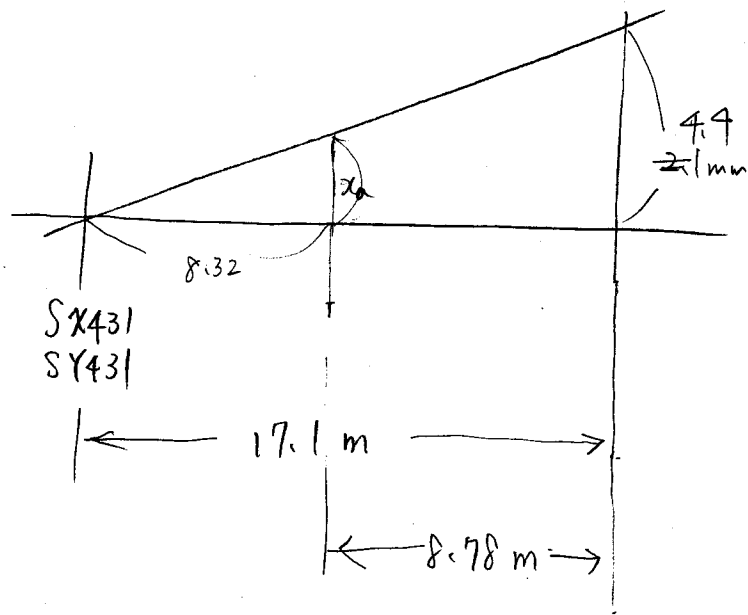
b = -1.2227 +/- .01598



Function = (a (x+(-b)))

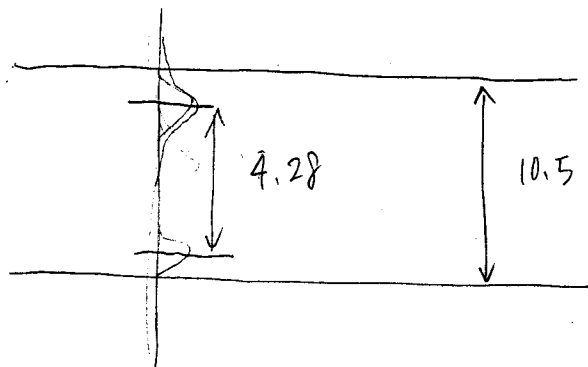
Hard Copy

~~3.9 mm~~



$$8.32 : 17.1 = \alpha : 4.4$$

$$\alpha = \frac{8.32 \times 4.4}{17.1} = 2.14 \text{ mm}$$



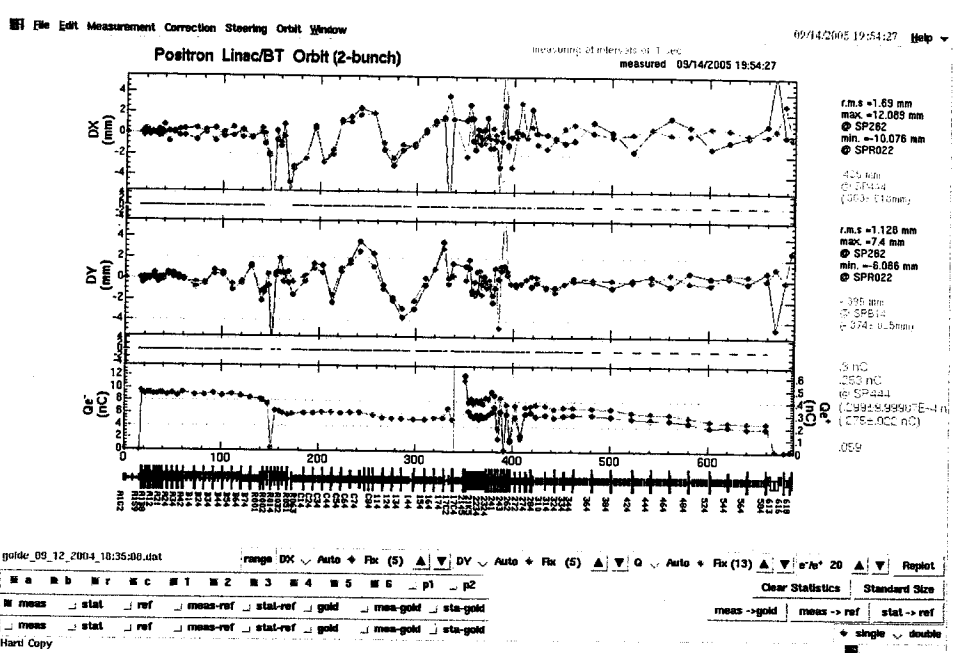
$$10.5 - 4.28 = 6.22$$

|
40

$$t'' = a \ 30 \ \#12'' \sim 4.7 \text{ mm}$$

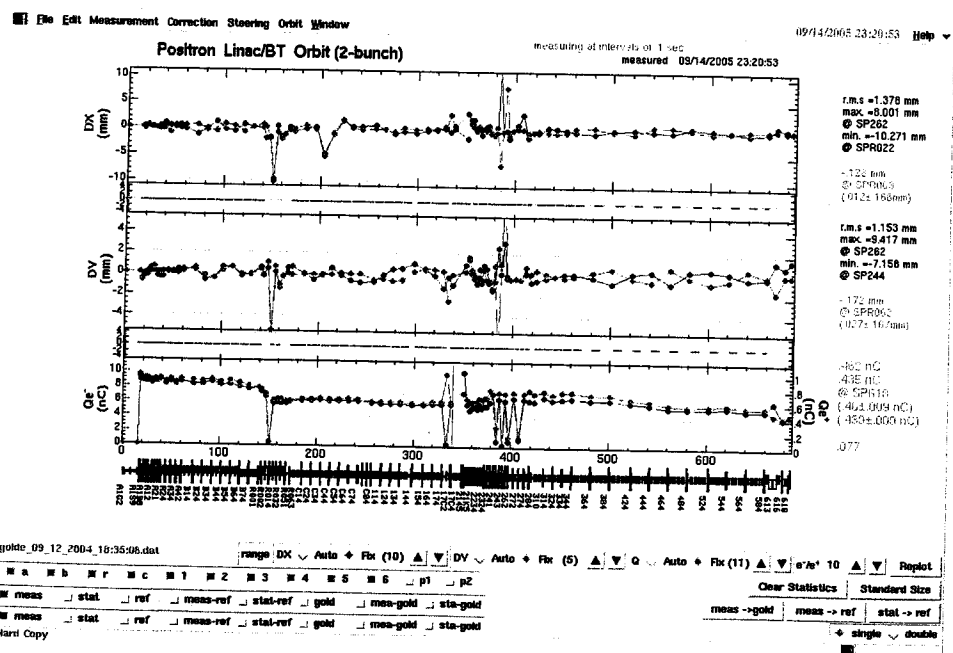
2005.09.14
19:15

DF 調整



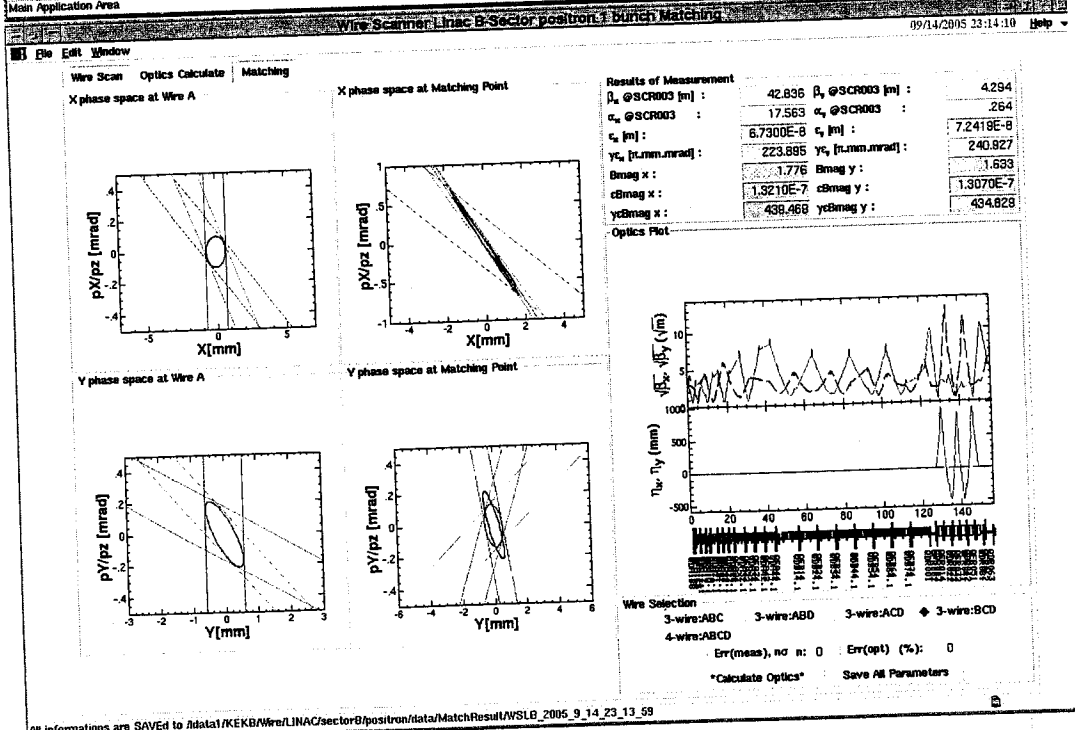
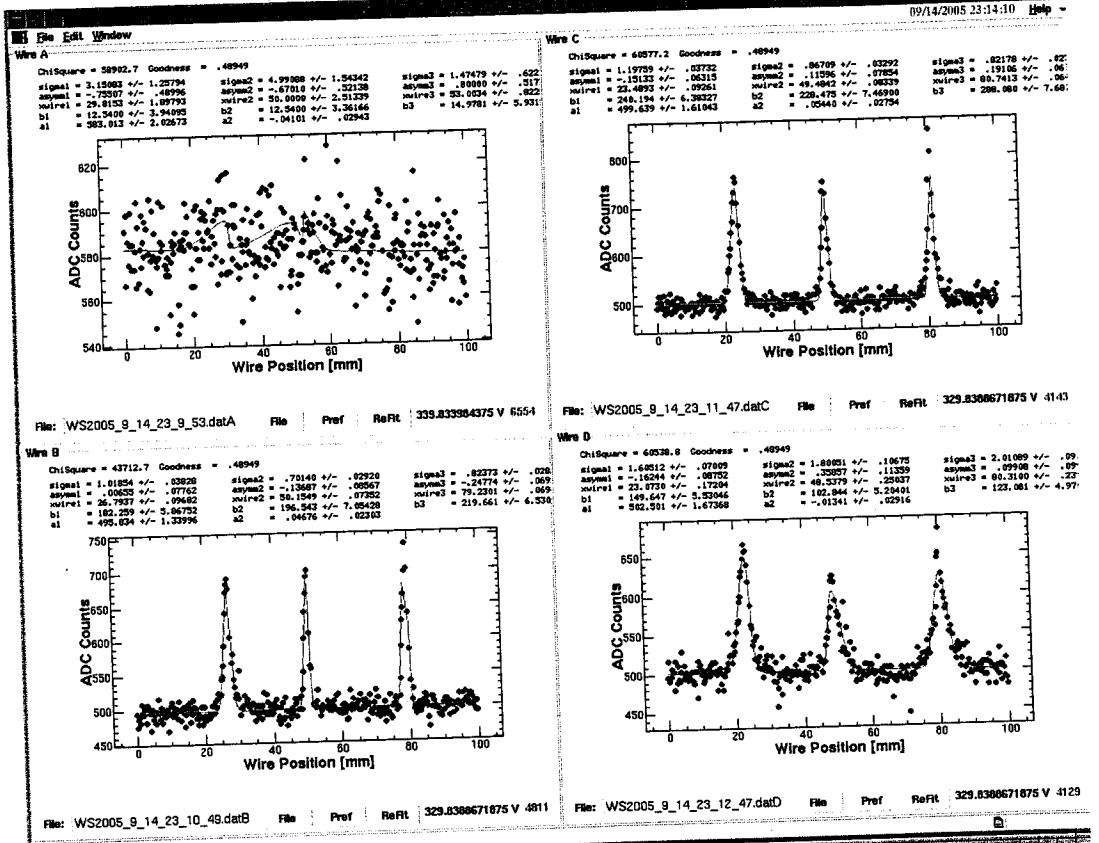
【調整前 Orbit】

- * SP A, B 調整
- * A, B の A 自動軌道補正
- C, 1
- 3, 4, 5 "
- * SB 2, 3, 4 φ 調整 etc 調整.

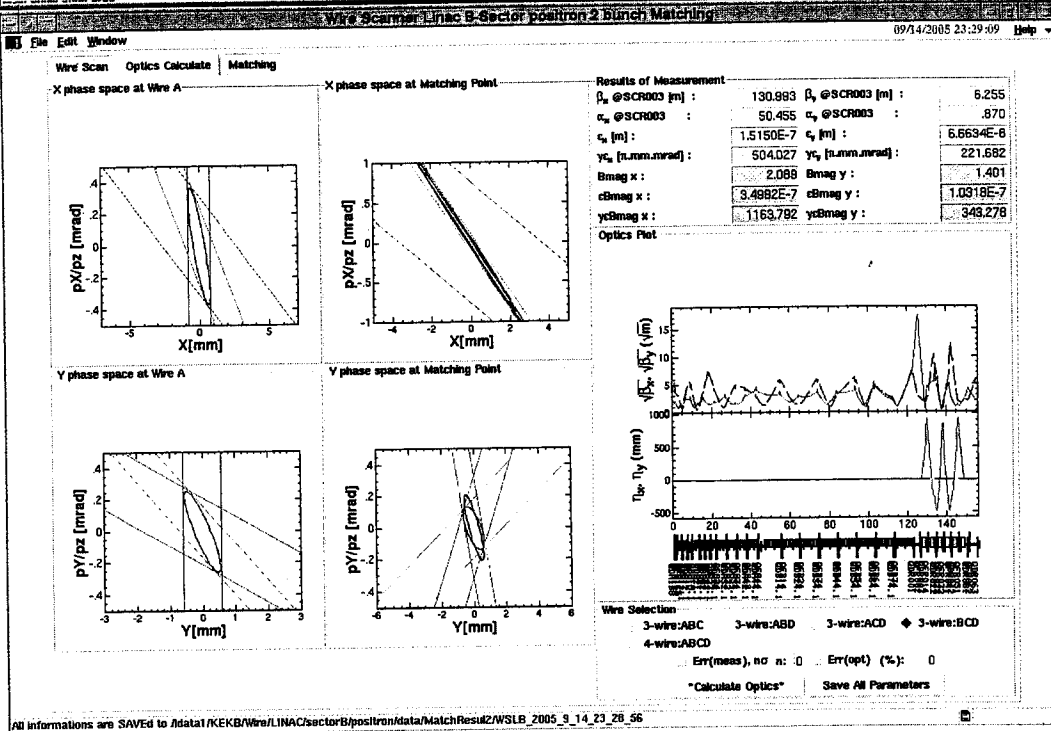
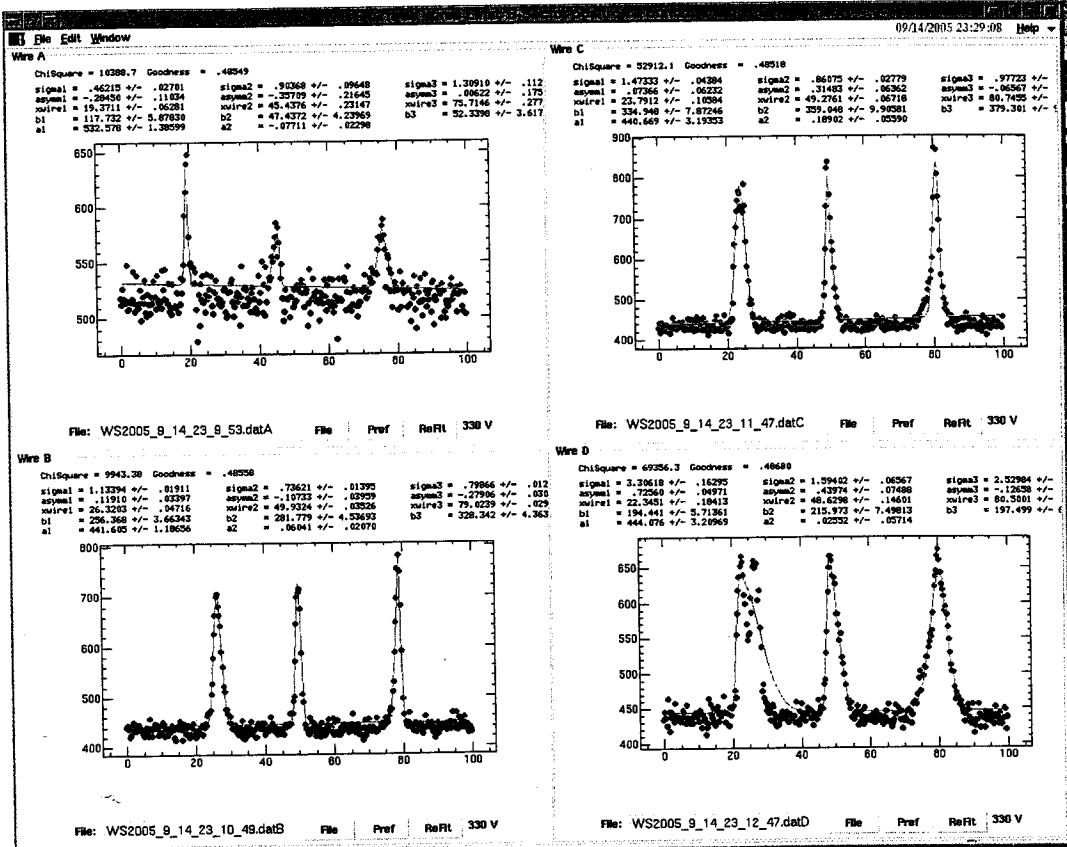


【調整後 Orbit】

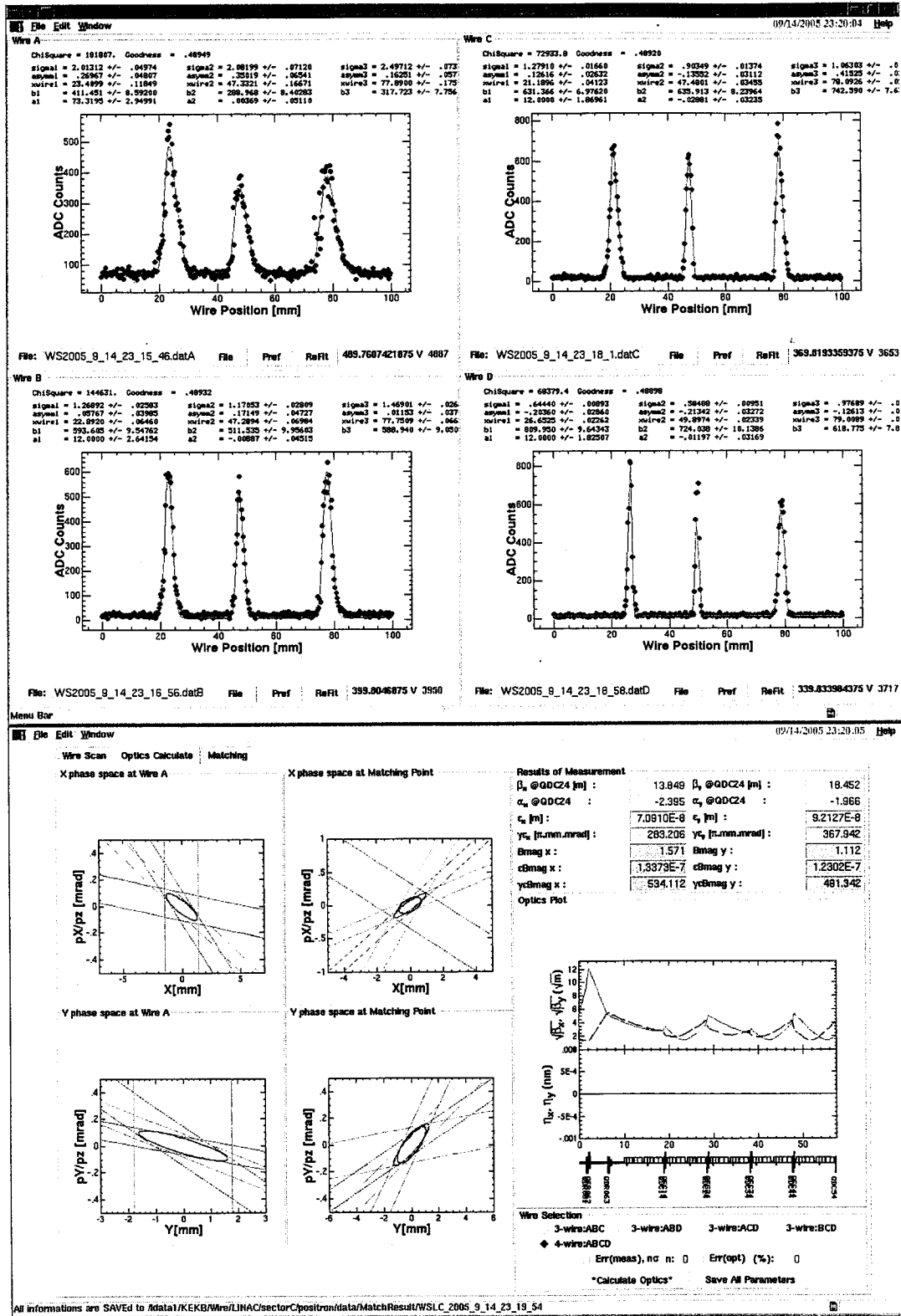
調整後 Wire Scanner 測定実施



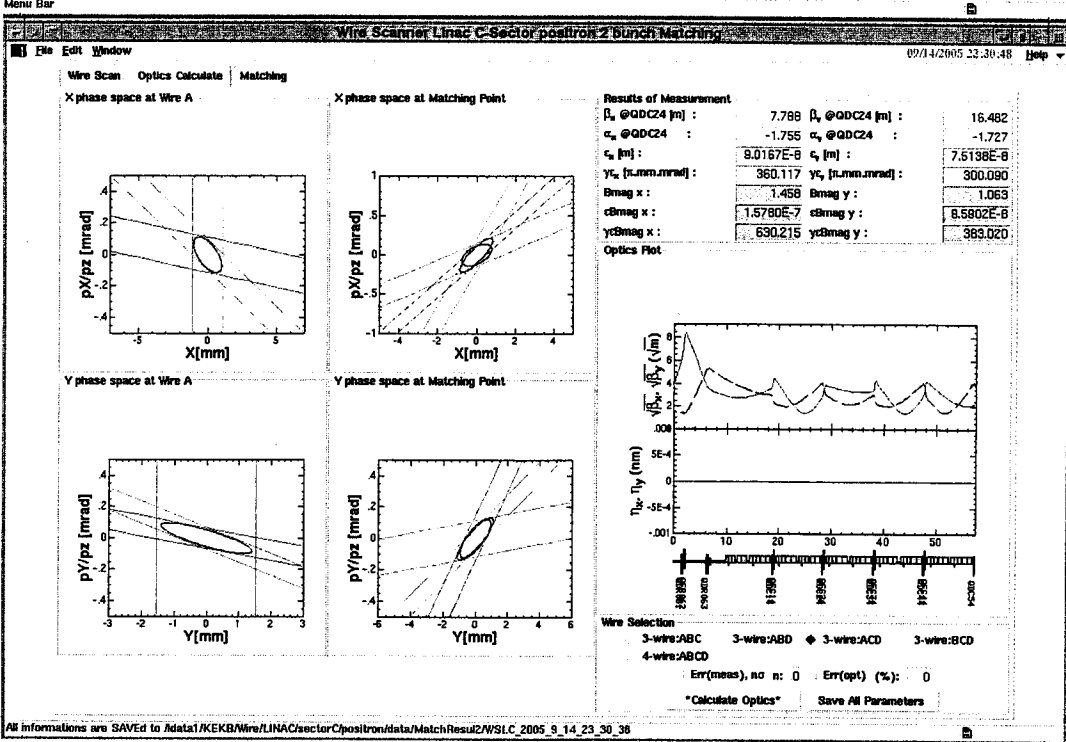
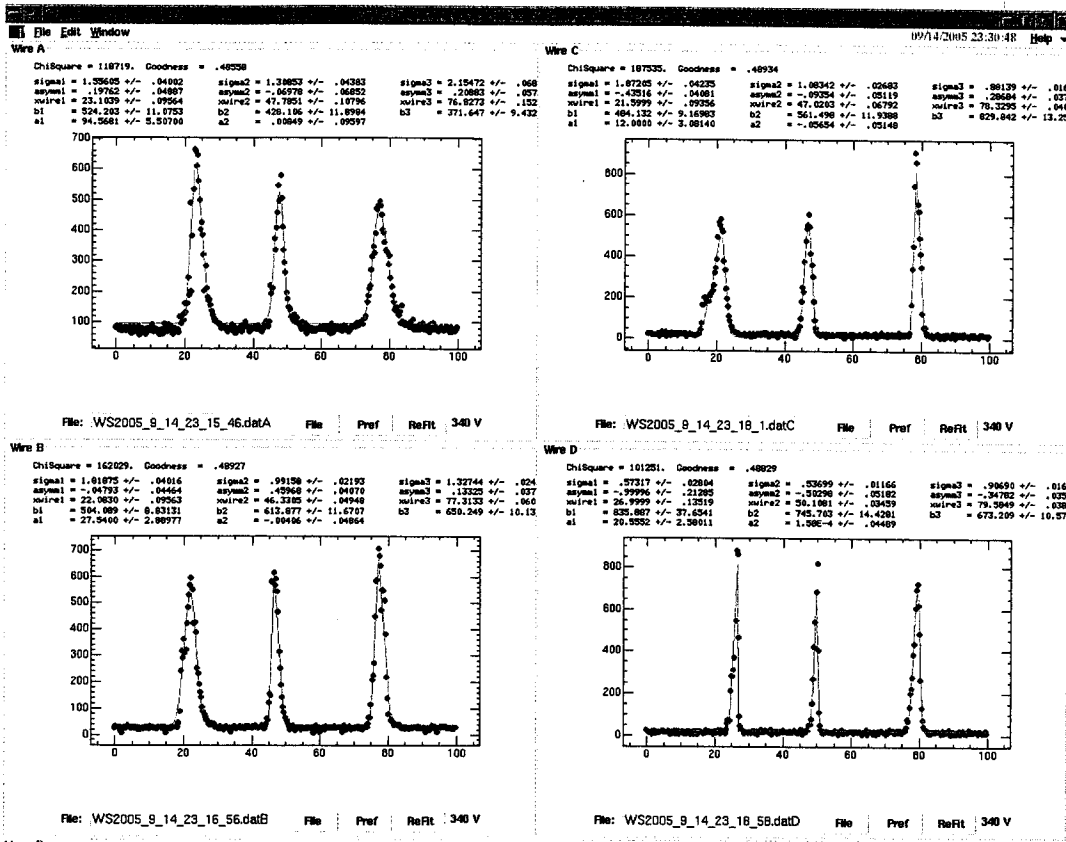
: B679-1st BmagX: 1.776 BmagY: 1.633



B779- Znd Bmagx: 2.089 Bmagy: 1.401

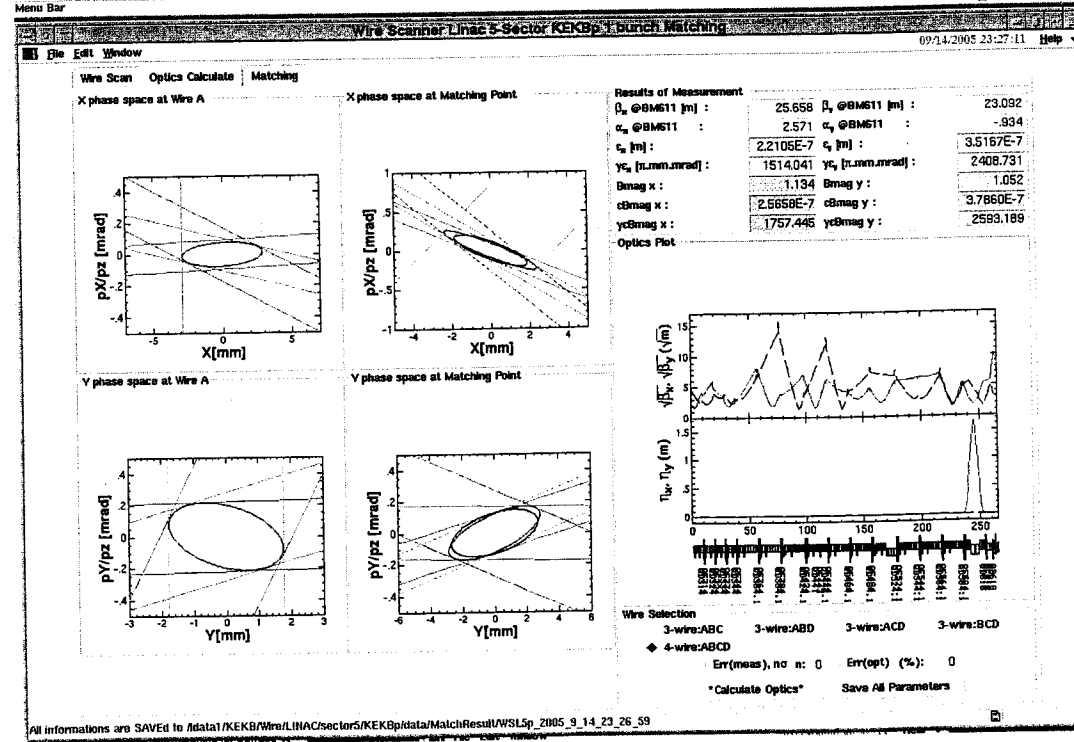
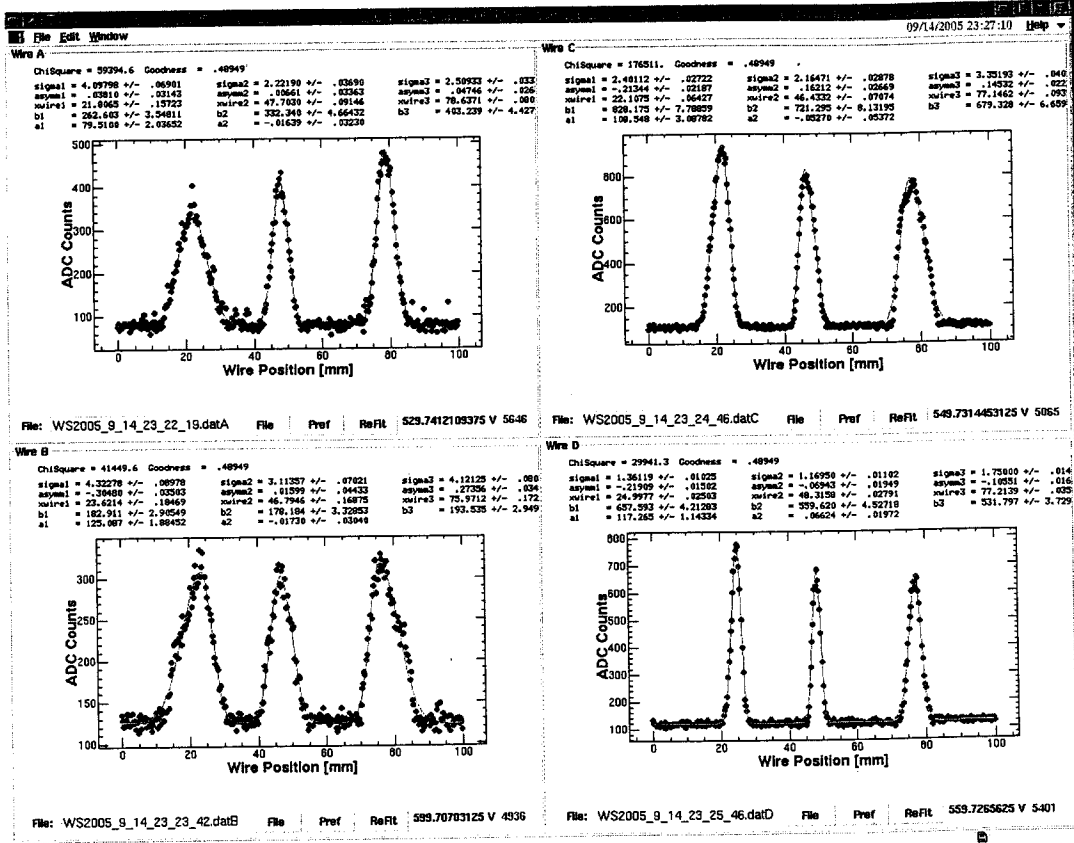


C7A-1st Bmagx: 1.571 Bmagy: 1.112

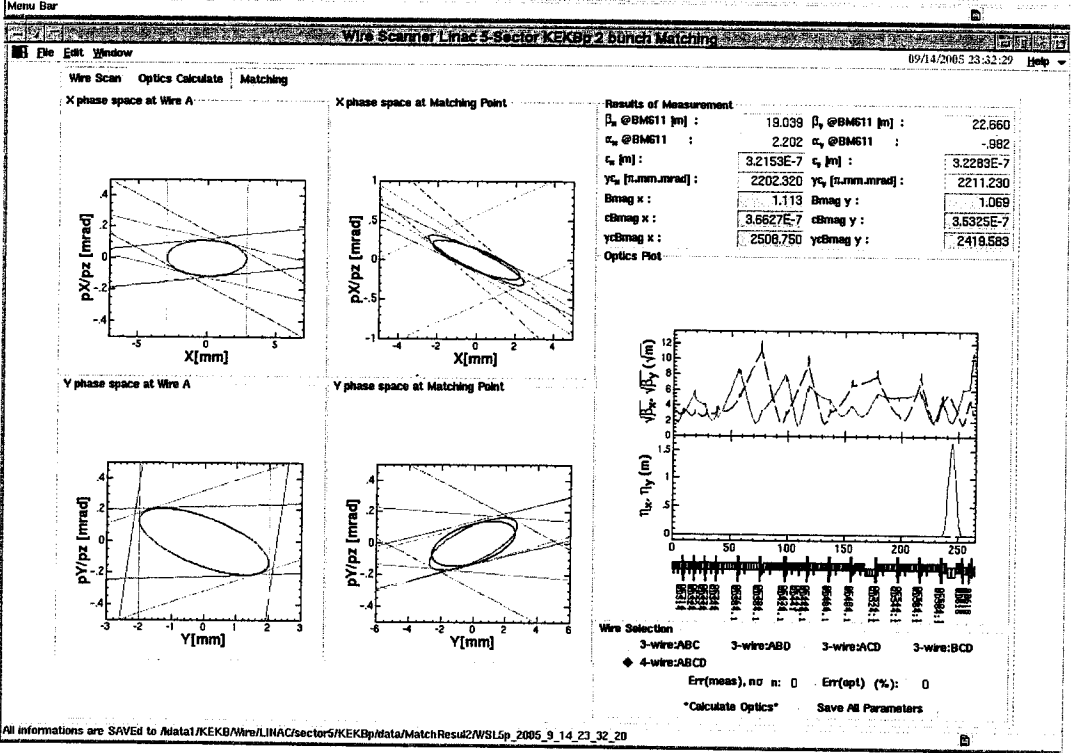
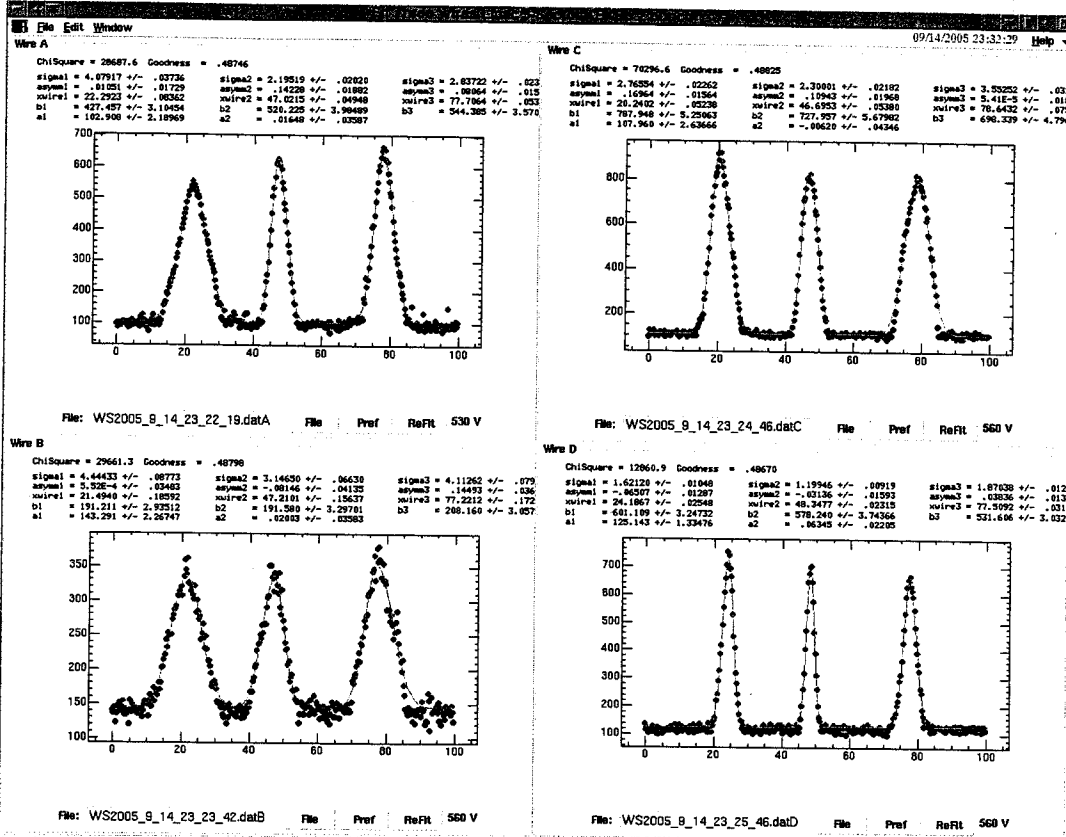


C#79 - 2nd

BmagX: 1.458 BmagY: 1.063



5079-1st BmagX=1.134 BmagY=1.052



5 THA - 2nd BmagX: 1.113 BmagY: 1.069